



TRITTON RESOURCES PTY LTD

ABN 88 100 095 494

Rehabilitation Management Plan



for the
Murrawombie Copper Mine



Prepared by:

RWCorkery&co

August 2023



TRITTON RESOURCES PTY LTD

ABN 88 100 095 494

Rehabilitation Management Plan

for the

Murrawombie Copper Mine

Prepared for:

Tritton Resources Pty Ltd
ABN: 88 100 095 494

Yarrandale Road
HERMIDALE NSW 2831

Telephone: (02) 6838 1100
Email: info@aerisresources.com.au

Prepared by:

R.W. Corkery & Co. Pty. Limited
Geological & Environmental Consultants
ABN: 31 002 033 712

Telephone: (02) 9985 8511
Email: admin@rwcorkery.com
Postal: PO Box 1796
CHATSWOOD NSW 2057

Sydney | Orange | Townsville

Sydney
Suite 12.01, 1-5 Railway Street
CHATSWOOD NSW 2067

Orange
62 Hill Street
ORANGE NSW 2800

Ref No. 117/60

August 2023

Summary Table

Name of Mine		Murrawombie Copper Mine		
RMP Commencement Date		2 August 2022		
Mineral Authorities		ML1280	Expiry Date	13 January 2038
				5 August 2034
Name of Leaseholder		Tritton Resources Pty Ltd		
Version	Author	Purpose	Approved by	Date of Submission
0.1	A. Weihart/N. Warren	Initial RMP	-	-
0.2	RWC (M. Fake)	Final draft for website	M. Fake (RWC)	04/8/2023

This Copyright is included for the protection of this document

COPYRIGHT

© R.W. Corkery & Co. Pty Limited 2023
and

© Tritton Resources Pty Ltd 2023

All intellectual property and copyright reserved.

Apart from any fair dealing for the purpose of private study, research, criticism or review, as permitted under the Copyright Act, 1968, no part of this report may be reproduced, transmitted, stored in a retrieval system or adapted in any form or by any means (electronic, mechanical, photocopying, recording or otherwise) without written permission. Enquiries should be addressed to R.W. Corkery & Co. Pty Limited.

Contents

	Page
LIST OF ACRONYMS	VI
1. INTRODUCTION TO MINING PROJECT	1
1.1 HISTORY OF OPERATIONS.....	4
1.1.1 Mining Activities	5
1.1.2 Rehabilitation	5
1.2 CURRENT DEVELOPMENT CONSENTS, LEASES AND LICENCES	6
1.3 LAND OWNERSHIP AND LAND USE.....	7
1.3.1 Land Ownership and Land Use Figure	11
2. FINAL LAND USE	14
2.1 REGULATORY REQUIREMENTS FOR REHABILITATION	14
2.2 FINAL LAND USE OPTIONS ASSESSMENT	14
2.3 FINAL LAND USE STATEMENT	25
2.4 FINAL LAND USE AND MINING DOMAINS	25
2.4.1 Final Land Use Domains.....	25
2.4.2 Mining Domains	28
3. REHABILITATION RISK ASSESSMENT	30
4. REHABILITATION OBJECTIVES AND REHABILITATION COMPLETION CRITERIA	44
4.1 REHABILITATION OBJECTIVES AND REHABILITATION COMPLETION CRITERIA	44
4.2 REHABILITATION OBJECTIVES AND REHABILITATION COMPLETION CRITERIA – STAKEHOLDER CONSULTATION	44
5. FINAL LANDFORM AND REHABILITATION PLAN	61
5.1 FINAL LANDFORM AND REHABILITATION PLAN	61
6. REHABILITATION IMPLEMENTATION	64
6.1 LIFE OF MINE REHABILITATION SCHEDULE	64
6.2 PHASES OF REHABILITATION AND GENERAL METHODOLOGIES	67
6.2.1 Active Mining Phase	67
6.2.2 Decommissioning.....	84
6.2.3 Landform Establishment	91
6.2.4 Growth Medium Development	94
6.2.5 Ecosystem and Land Use Establishment	96
6.2.6 Ecosystem and Land Use Development.....	102
6.3 REHABILITATION OF AREAS AFFECTED BY SUBSIDENCE.....	104
7. REHABILITATION QUALITY ASSURANCE PROCESS	105
8. REHABILITATION MONITORING PROGRAM	107
8.1 ANALOGUE SITE BASELINE MONITORING	107
8.2 REHABILITATION ESTABLISHMENT MONITORING	109

Contents

Page

8.3	MEASURING PERFORMANCE AGAINST REHABILITATION OBJECTIVES AND REHABILITATION COMPLETION CRITERIA	112
9.	REHABILITATION RESEARCH AND TRIALS	113
9.1	CURRENT REHABILITATION RESEARCH AND TRIALS	113
9.1.1	Heap Leach Pad – Store-Release Cover Trial	113
9.1.2	Heap Leach Pad Rehabilitation Trial – Soda Ash Brine	114
9.2	FUTURE REHABILITATION RESEARCH AND TRIALS	114
9.2.1	Seed Balance and Procurement Strategy	114
9.2.2	Post-Closure Water Management Strategy	115
9.2.3	Land Contamination and Hazard Assessment	115
9.2.4	Detailed Capping and Closure Designs	116
9.2.5	Landform Modelling	116
10.	INTERVENTION AND ADAPTIVE MANAGEMENT	118
10.1	THREATS TO REHABILITATION	118
10.2	TRIGGER ACTION RESPONSE PLAN	118
11.	REVIEW, REVISION AND IMPLEMENTATION	124
12.	REFERENCES	125

APPENDICES

Appendix 1 Rehabilitation Control Checklist

FIGURES

Figure 1	Locality Plan and Mineral Authorities	2
Figure 2	Murrawombie Mine Site Layout	3
Figure 3	Land Ownership	9
Figure 4	Land Uses	10
Figure 5	Vegetation Communities	12
Figure 6	Land Zoning	13
Figure 7	Murrawombie Mine Final Land Use Domains	27
Figure 8	Murrawombie Mining Domains	29
Figure 9	Surface Water Management	80
Figure 10	Rehabilitation Monitoring Sites	108

Contents

	Page
TABLES	
Table 1	Consents, Leases and Licences 6
Table 2	Land Ownership 8
Table 3	Regulatory Requirements for Rehabilitation 15
Table 4	Final Land Use Domains 26
Table 5	Mining Domains 28
Table 6	Tritton Consequence Table 31
Table 7	Qualitative Likelihood Rating 32
Table 8	Qualitative Risk Rating 33
Table 9	Residual Risk Level Action 33
Table 10	Rehabilitation Risk Assessment 34
Table 11	Community Consultation Activities 44
Table 12	Rehabilitation Objectives and Completion Criteria 46
Table 13	Murrawombie Topsoil and Subsoil Inventory 68
Table 14	Non-Production Waste Management 75
Table 15	Requirements for Infrastructure to be Removed or Demolished 86
Table 16	Requirements for Infrastructure to be Retained 87
Table 17	Regional Climate Statistics 95
Table 18	Mine Rehabilitation Species List 98
Table 19	Suitable Species for Revegetation Trials on Murrawombie Heap Leach Pads 101
Table 20	Key Roles and Responsibilities 106
Table 21	Analogue Reference Sites 107
Table 22	Trigger Action Response Plan 119
Table 23	Rehabilitation Management Plan Review / Amendment Triggers 124
PLANS	
Plan 1	Murrawombie Copper Mine – Final Landform Features 62
Plan 2	Murrawombie Copper Mine – Final Landform Contours 63
Plan 3	Murrawombie Mine Progressive Rehabilitation Schedule - 2022 to 2026 65
Plan 4	Murrawombie Mine Progressive Rehabilitation Schedule - 2027 to 2031 66

List of Acronyms

AHD	Australian Height Datum
ARI	Annual Recurrence Interval
AS	Australian Standard
CPT	Cone Penetrometer Test
DA	Development Application
DnA	DnA Environmental
EIS	Environmental Impact Assessment
EPL	Environment Protection Licence
GCC	Girilambone Copper Company
HDPE	High-Density Polyurethane
HLP	Heap Leach Pad
LEM	Landform Evolution Modelling
LFA	Landscape Function Analysis
LTI	Lost Time Injury
MCP	Mine Closure Plan
ML	Mining Lease
MOP	Mining Operations Plan
MTI	Medical Treatment Injury
NAF	Non-Acid Forming
NAG	Net Acid Generation
NAPP	Net Acid Producing Potential
NATA	National Association of Testing Authorities
NEPM	National Environmental Protection Measure
NGO	Non-Government Organisation
NSW	New South Wales
PAF	Potentially Acid Forming
pH	Potential Hydrogen
PSM	Pells Sullivan Meynink
RAP	Remedial Action Plan
RGS	RGS Environmental Pty Ltd
RMP	Rehabilitation Management Plan
ROM	Run of mine
RWC	R.W. Corkery & Co. Pty Limited
RWI	Restricted Work Injury
S%	Sulphate content
SAB	Soda Ash Brine
TARP	Trigger Action Response Plan
TSF	Tailings Storage Facility
WRE	Waste Rock Emplacement

1. Introduction to Mining Project

This *Rehabilitation Management Plan* (RMP) has been prepared by R.W. Corkery & Co. Pty. Limited (RWC) on behalf of Tritton Resources Pty Ltd (the “Company”), a wholly owned subsidiary of Aeris Resources Limited for the Murrawombie Copper Mine (the “Mine”). The Mine is located west of the village of Girilambone within the Bogan Local Government Area (LGA) in central west NSW (**Figure 1**). The principal mineral authority for the Mine is Mining Lease (ML)1280. For the purpose of this document, the area covered by ML1280 is referred to as the “Mine Site” (see **Figures 1** and **2**).

The Mine is one of four operational mines within the vicinity of Girilambone that are owned and operated by the Company, collectively referred to as the Tritton Copper Operations. For the purposes of this RMP, the Tritton Copper Operations consists of:

- the Tritton Copper Mine;
- the Murrawombie Copper Mine;
- the North East Copper Mine; and
- the Avoca Tank Mine,

In general, all mines within Tritton Copper Operations are managed in parallel where practicable; as such, many existing assessments, approvals, and management plans may apply to multiple or all mines within the Tritton Copper Operations. This RMP relates only to the management of rehabilitation within the Mine Site (i.e. the Murrawombie Copper Mine).

It should be noted that Mining Purpose Leases (MPL) 294 and 295 are held by the Company and are associated with the Mine Site. MPL295 was granted 6 August 1992 under the *Mining Act 1973*; however, no mining-related disturbance associated with the Mine Site and/or the Company has occurred within MPL295. MPL294 was established for the purposes of a section of a water supply pipeline to the Mine Site and associated pumping facilities. Disturbance associated with the construction of the water supply infrastructure was completed as part of site establishment. No other mining-related disturbance occurs within MPL294. The three leases associated with the Mine are held under a joint rehabilitation security. Notwithstanding the above, this Plan only relates to the rehabilitation of mining-related disturbance within ML1280.

The RMP is intended to provide a summary of current plans for progressive and final rehabilitation of the Mine and a practical guide to rehabilitation planning for site personnel. The RMP provides the following information.

- Introduction to the Mine (Section 1).
- Final land use information including regulatory requirements (Section 2).
- A summary of the current rehabilitation risk assessment outcomes (Section 3).
- A statement of the Company’s rehabilitation objectives and the completion criteria that must be satisfied before rehabilitation is considered complete (Section 4).
- Final landform plans (Section 5).

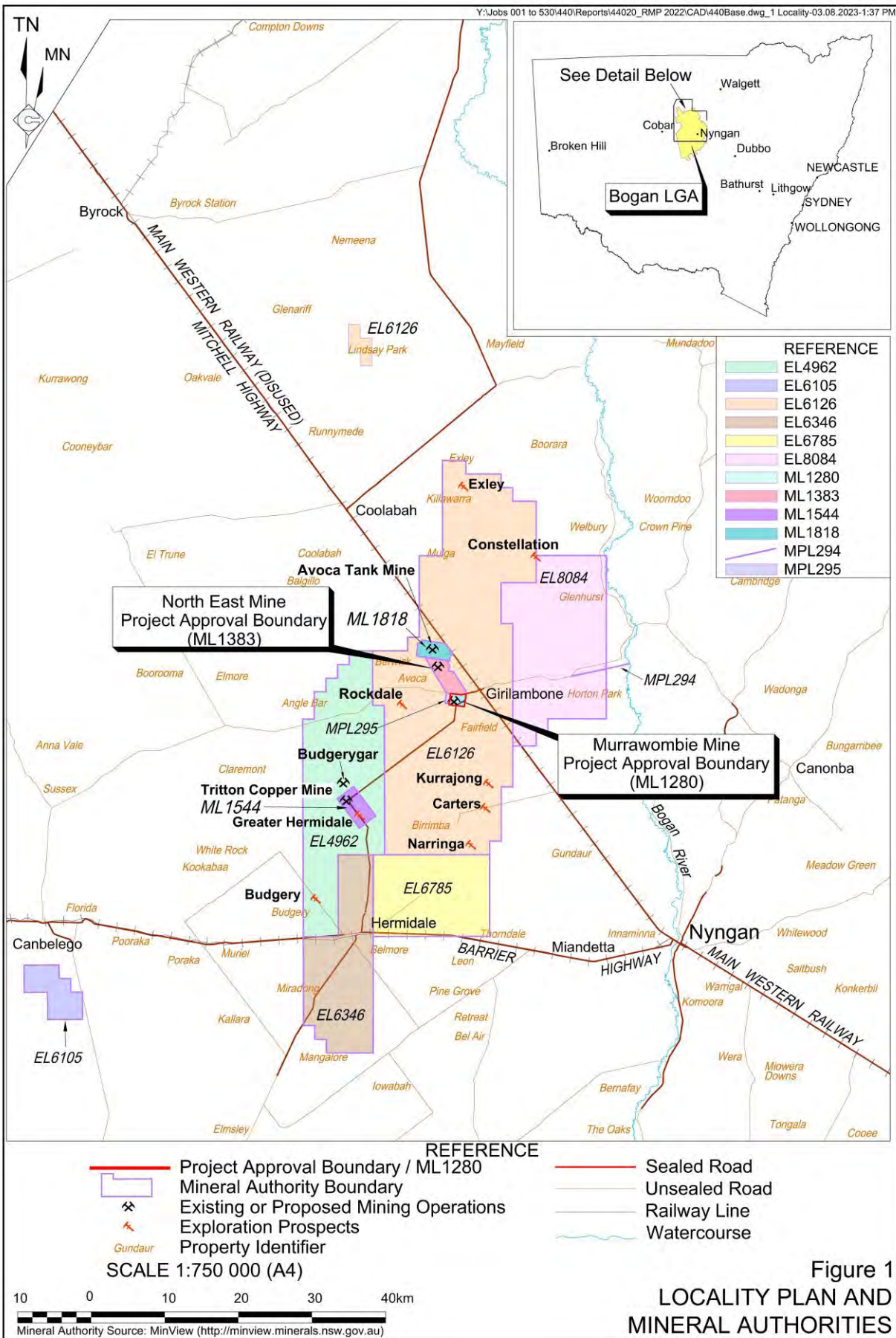
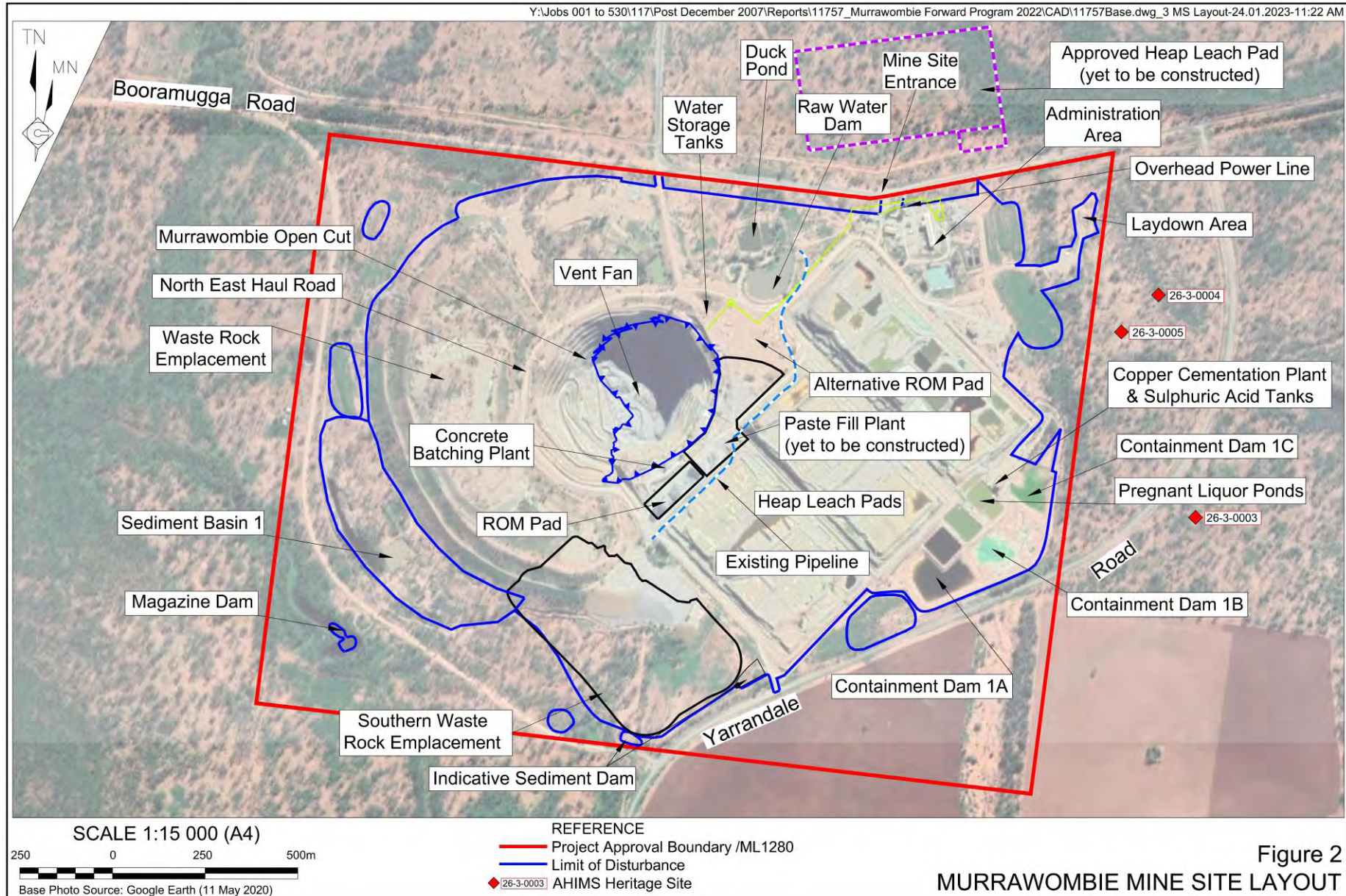


Figure 1
LOCALITY PLAN AND
MINERAL AUTHORITIES



- An overview of the planned implementation of progressive and final rehabilitation (Section 6).
- A summary of how rehabilitation quality will be maintained (Section 7).
- An overview of intended rehabilitation monitoring (Section 8) and ongoing research and trials (Section 9).
- A summary of the Company's management approach including a trigger action response plan (Section 10) and procedures for review and update of the plan (Section 11).

This RMP has been prepared in accordance with the following documents and guidelines.

- *Form and Way: Rehabilitation Management Plan for Large Mines (July 2021).*
- *Form and Way: Rehabilitation Objectives, Rehabilitation Completion Criteria and Final Landform and Rehabilitation Plan for Large Mines (July 2021).*
- *Guideline 1: Rehabilitation Risk Assessment (July 2021).*
- *Guideline 2: Rehabilitation Records (July 2021).*
- *Guideline 3: Rehabilitation Controls (July 2021).*
- *Guideline 5: Rehabilitation Objectives and Rehabilitation Completion Criteria (July 2021).*

1.1 History of Operations

Historical Mining Activities

The Girilambone copper deposits were first discovered in 1879 with mining commencing in the vicinity of what is now Girilambone village in 1881. Mining of other known deposits such as Budgerygar and Budgery (see **Figure 1**) occurred throughout 1906 to 1908 and 1920, respectively. Other minor historical mining operations are known to have occurred sporadically throughout the 20th century. Several other historic mining areas are known to be located throughout the area.

The Girilambone Copper Company (GCC), a Joint Venture between Tritton Resources Pty Ltd (60%) and Nord Pacific Ltd (40%) was formed in 1992, following development of the (then) Girilambone Copper Mine (now the Murrawombie Copper Mine), to undertake mineral exploration within relatively close proximity to the existing mine.

The Murrawombie Copper Mine

The Mine is located approximately 3.5km west of the village of Girilambone (**Figure 1**). Operations at this mine commenced under Development Application (DA) 1/91 and Mining Lease (ML) 1280 in 1992. The development consent was issued by Bogan Shire Council and does not contain an expiry date. Relinquishment of ML1280 is expected to be in 2033. The Mine operates in accordance with the conditions of development consent, the mining lease and Environment Protection Licence (EPL) 4501.

1.1.1 Mining Activities

The Mine operation comprises an open pit (Murrawombie Open Pit), a decline portal to the Murrawombie underground mine, a heap leach copper extraction circuit, and maintenance and administrative activities. The ore extracted from the underground operation is transported to the run of mine (ROM) pad at the surface where it is stored prior to being hauled to the Tritton Mine for processing via Yarrandale Road (**Figure 1**). Open cut operations have ceased in the short term and underground extraction activities are ongoing. The heap leach circuit continues to operate producing copper using the cementation method. The development consent for the Mine includes approval for ore processing activities that were used prior to the commencement of processing at the Tritton Mine. All ore mined at the Mine is transported to the Tritton Mine for processing.

In 2007, development consent was received for mining by underground methods, which continued until 2008. Underground operations have recommenced and are continuing. In preparation for underground operations, the Company constructed an entrance portal and decline ramp in the north-eastern wall of the open cut. Underground workings have continued to an elevation of approximately -310m AHD or 510m below ground level. On-site recovery of copper from leachate has continued utilising the existing Heap Leach Pads and a newly refurbished copper cementation plant. The existing administration and workshop area have remained in use by the Company including as a base for mining operations at the North East Mine when it was actively operating and for the current preparatory works for mining at the Avoca Tank Mine.

On 2 November 2015 approval was received to extend the open cut laterally by approximately 50m and increase the final depth to 35m AHD or 155m below the surface level. Ancillary activities associated with the extension of the open cut included development of a southern extension to the Murrawombie Waste Rock Emplacement and development of an alternative ROM Pad. A minor modification to DA 1/91 was approved on 19 April 2016 to confirm the ongoing use of the existing ROM Pad prior to construction of a relocated ROM Pad and the correction of minor typographical errors in the consent. The most recent modification to DA 1/91 was granted 2 February 2023 for the relocation and/or modification of site infrastructure and surface operations to facilitate the extension of the Open Cut.

A separate approval (DA 10/2018/027/001) applies to the Murrawombie Mine for the construction and use of a paste fill plant utilising tailings material imported from the Tritton Mine. Construction of the paste fill plant has not commenced, however may be constructed at some point in the future.

1.1.2 Rehabilitation

To date, rehabilitation has focused on approximately 42.6ha of the Murrawombie Waste Rock Emplacement. The Murrawombie Waste Rock Emplacement was progressively rehabilitated during construction. The southern area of the Murrawombie Waste Rock Emplacement was extended during mining of the Murrawombie Open Cut and remains operational. Stockpiled material is currently operational and therefore not able to be rehabilitated. The Company is currently utilising this waste rock for Cemented Rock Fill (CRF) activities to support underground mining at Murrawombie Mine Site.

Other areas rehabilitated as of 2023 also included low grade gold and copper stockpiles, the Run of Mine (ROM) pad and the crushing and screening plant area.

A rehabilitation monitoring report focusing on the Murrawombie Waste Rock Emplacement was completed in September 2020, where the overabundance of herbivores (particularly goats and macropods) was identified as a rehabilitation issue with a high management requirement priority. The report also identified a low abundance and diversity of endemic tree species on some areas of woodland rehabilitation as well as a lack of litter, perennial groundcover and total ground cover as rehabilitation issues associated with long-term management outcomes.

The Company have undertaken a small-scale laboratory rehabilitation trial on the Heap Leach Pads to investigate the opportunity to significantly improve the geochemistry of the heap leach material using Soda Ash Brine (SAB) as a precursor step in final closure and rehabilitation of the Heap Leach Pads. Between 2017 and 2020 RGS Environmental Pty Ltd (RGS) completed geochemical assessment work on the Heap Leach Pads material. Laboratory scale tests have shown the SAB to be suitable as an alkaline solution to flush the heap leach material and shut down the acid leach process. In August 2021, the Environment Protection Licence (EPL) 4501 was amended to allow for a field trial use of the SAB within the Heap Leach Pads (refer Section 9.1.2). The trial commenced in November 2021, and is currently on hold pending further consultation with the NSW EPA.

A conceptual capping design has been prepared for the Heap Leach Pads. Further information is presented in Section 6.2.3.3.

1.2 Current Development Consents, Leases and Licences

Table 1 presents the consents, authorisations and licences held in relation to the Mine.

Table 1
Consents, Leases and Licences

Page 1 of 2

Consent/Licence	No.	Grant Date	Expiry Date	Purpose of Approval
Environment Protection Licence	4501	13/12/1999	N/A	Mining (other than coal). This licence covers both the North East Mine and the Murrawombie Mine.
Development Consent	1/91	25/03/1991	25/03/1996	Original Development Approval for the Murrawombie Open Cut and Underground Mine.
	5/95	21/09/1995	N/A	Ancillary works associated with the original Murrawombie Development Approval.
	2010/022	13/9/2010	13/9/2015	Subdivision of Booroomugga Road which intersects the Murrawombie mining area.
	2010/029	04/11/2010	04/11/2015	Construction of a Communication Tower at Murrawombie.
	10/2018/027/001	07/11/2018	07/11/2023	Construction of a Paste Fill Plant
Development Consent Modification	1/91 MOD 1	13/12/2007	N/A	Underground mining of copper sulphide deposits beneath the existing Murrawombie Open Cut, production of copper cement using the existing heap leaching process and transportation of up to 1Mtpa of copper ore to the Tritton Copper Mine for processing ¹ .
	1/91 MOD 2	2/11/2015	2/11/2020	Extension to the open cut pit, extension of the Murrawombie Waste Rock Emplacement and relocation of the ROM pad.

Table 1 (Cont'd)
Consents, Leases and Licences

Page 2 of 2

Consent/Licence	No.	Grant Date	Expiry Date	Purpose of Approval
Development Consent	1/91 MOD 3	19/04/2016	19/04/2021	Confirmation of ongoing ROM Pad use and correction of typographical errors in the consent.
Modification (Cont'd)	1/91 MOD 4	2/2/2023		Minor changes to on-site infrastructure and operations to support ongoing Open Cut and Underground mining.
Mining Lease	1280	06/08/1992	05/08/2034	Mining for Minerals (Copper, Gold and Silver)
Mining Purpose Lease	294	06/08/1992	05/08/2034	Access for the purpose of operation of a water access pipeline ancillary to mining operations with ML1280 and ML1544.
Mining Purpose Lease	295	06/08/1992	05/08/2034	Ancillary area for mining activities
Note 1: This approval permitted a combined, maximum total of 1Mtpa of copper ore to be transported from the North East Open Cuts and Underground Mine and the Murrawombie Open Cut and Underground Mine to the Tritton Copper Mine.				
Source: Tritton Resources Pty Ltd				

1.3 Land Ownership and Land Use

Table 2 presents the land ownership for land within and adjacent to the Mine Site, as well as for land within MPL294 and MPL295. In summary, land within the Mine Site consists predominantly of freehold land owned by the Company and a small section of Crown land comprising of a Travelling Stock Reserve (Lot 7001 DP 1026710) and the Yarrandale Road reserve (**Figure 3**). The closest residences to the Mine Site are part of Girilambone Village, located approximately 2.5km to the east.

Land uses within and surrounding the Mine Site include the following (**Figure 4**).

- Mining –including mines associated with the Tritton Copper Operations.
- Agriculture – land within and surrounding the Mine Site has been or is currently being used for agricultural purposes, principally, cropping and sheep and cattle grazing. A range of agricultural properties include residences.
- Native vegetation forestry – The Girilambone State Forest occupies an area to the northeast of the Mine Site.
- Transportation – a range of State and local roads exist in the vicinity of the Mine Site, including Mitchell and Barrier Highways. The disused Main Western Railway is located to the east of the Mitchell Highway.
- Village residential – the village of Girilambone is located approximately 2.5km to the east of the Mine Site.

Proposed final land uses for the Mine Site are detailed in Section 2 of this RMP. In summary, it is proposed that principal final land uses will represent nature conservation (native ecosystems) and agricultural land (grazing).

Table 2
Land Ownership

Lot	Deposited Plan	Tenure	Owner	Leases
Mine Site				
A	317665	Freehold	Private Individual	ML1280
B	317665	Freehold	Private Individual	ML1280
3/6	986	Freehold	Private Individual	ML1280
18	4472	Freehold	Private Individual	ML1280
1, 2, 3	1151065	Freehold	Nord Australax	ML1280
1/1, 2/1, 3/1, 4/1, 5/1 6/1, 7/1, 8/1, 9/1, 10/1, 1/2, 2/2, 3/2, 4/2, 5/2, 6/2, 7/2, 8/2, 9/2, 10/2, 1/3, 2/3, 3/3, 4/3, 5/3, 6/3, 7/3, 8/3, 9/3, 10/3, 7/4, 8/4, 9/4, 10/4, 1/5, 3/5, 4/5, 5/5, 6/5, 7/5, 8/5, 9/5, 10/5, 1/6, 2/6, 6/6, 1/7, 1/8, 1/9, 1/10, 2/10, 3/10, 4/10, 5/10, 6/10, 7/10, 8/10, 9/10, 10/10, 1/11, 2/11, 3/11, 4/11, 5/11, 6/11, 7/11, 8/11, 9/11, 10/11, 11/11, 1/12, 1/13, 5/14, 6/14, 7/14, 8/14, 9/14, 10/14, 11/14, 5/15, 6/15, 7/15, 8/15, 9/15, 10/15, 11/15, 1/16, 2/16, 3/16, 4/16, 5/16, 6/16, 7/16, 8/16, 9/16, 10/16	986	Freehold	Straits Mining	ML1280
1, 2, 3, 4, 5, 6, 7, 8, 9, 10, 11, 12, 13, 14, 15, 16, 17, 19, 20	4472	Freehold	Straits Mining	ML1280
21	920633	Freehold	Straits Mining	ML1280
22	920633	Freehold	Straits Mining	ML1280
22	861603	Freehold	Straits Mining	ML1280
2	833281	Freehold	Straits Mining	ML1280
1	822428	Freehold	Straits Mining	ML1280
300, 302, 303, 304, 305, 306, 308	1161667	Freehold	Straits Mining	ML1280
2, 56, 57, 111, 123	751315	Freehold	Straits Mining	ML1280
1/4, 1/5, 1/6, 1/8, 1/14, 2/14, 3/14, 4/14, 1/15, 2/15, 3/15, 4/15,	986	Freehold	Tritton Resources	ML1280
1	822427	Freehold	Tritton Resources	ML1280
3	751315	Freehold	Tritton Resources	ML1280
7001	1026710	Crown Land	The State of NSW	ML1280
Land Adjacent to the Mine Site				
11	858163	Freehold	Straits Mining	ML1383, ML1280
22	861603	Freehold	Straits Mining	ML1383, ML1280
35	864483	Freehold	Straits Mining	ML1280
33	751315	Freehold	Straits Mining	ML1280
34	864483	Freehold	Straits Mining	ML1280
301	1161667	Freehold	Straits Mining	ML1280
11	751315	Freehold	Tritton Resources	ML1280
1	827919	Freehold	Tritton Resources	ML1280
30	751315	Freehold	Tritton Resources	ML1280
13	751315	Freehold	Tritton Resources	ML1280
12	858163	Freehold	Tritton Resources	ML1280
117	751315	Freehold	Private Individual	ML1280
1	46859	Crown Land	The State of NSW	ML1280
MPL294				
33	751315	Freehold	Straits Mining	-
300, 301, 303	1161667	Freehold	Straits Mining	-
MPL294				
1	751320	Crown Land	The State of NSW	-
34, 35, 39	751320	Freehold	Private Individual	-
21	1230950	Freehold	Private Individual	-
7001	1020719	Crown Land	The State of NSW	-

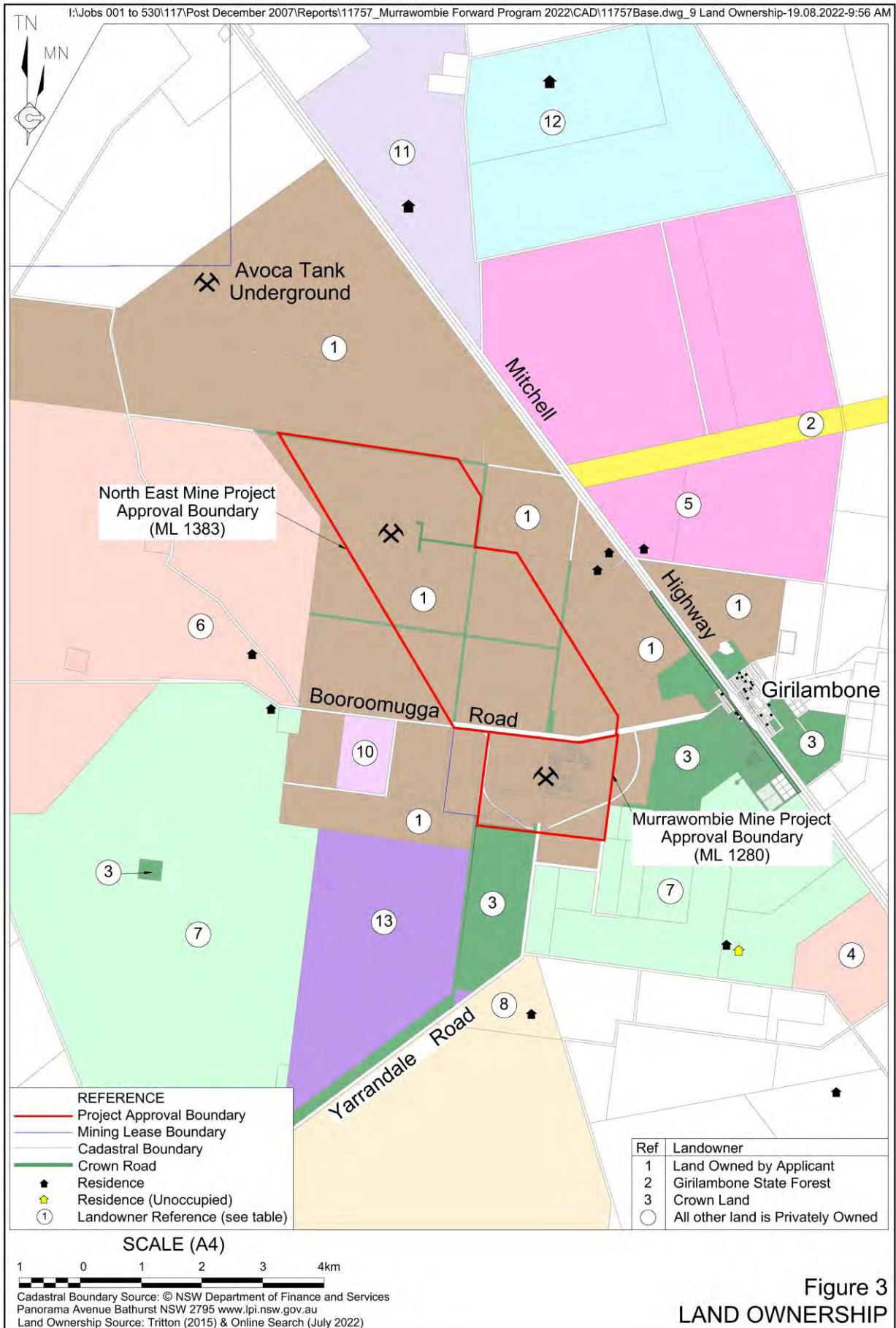
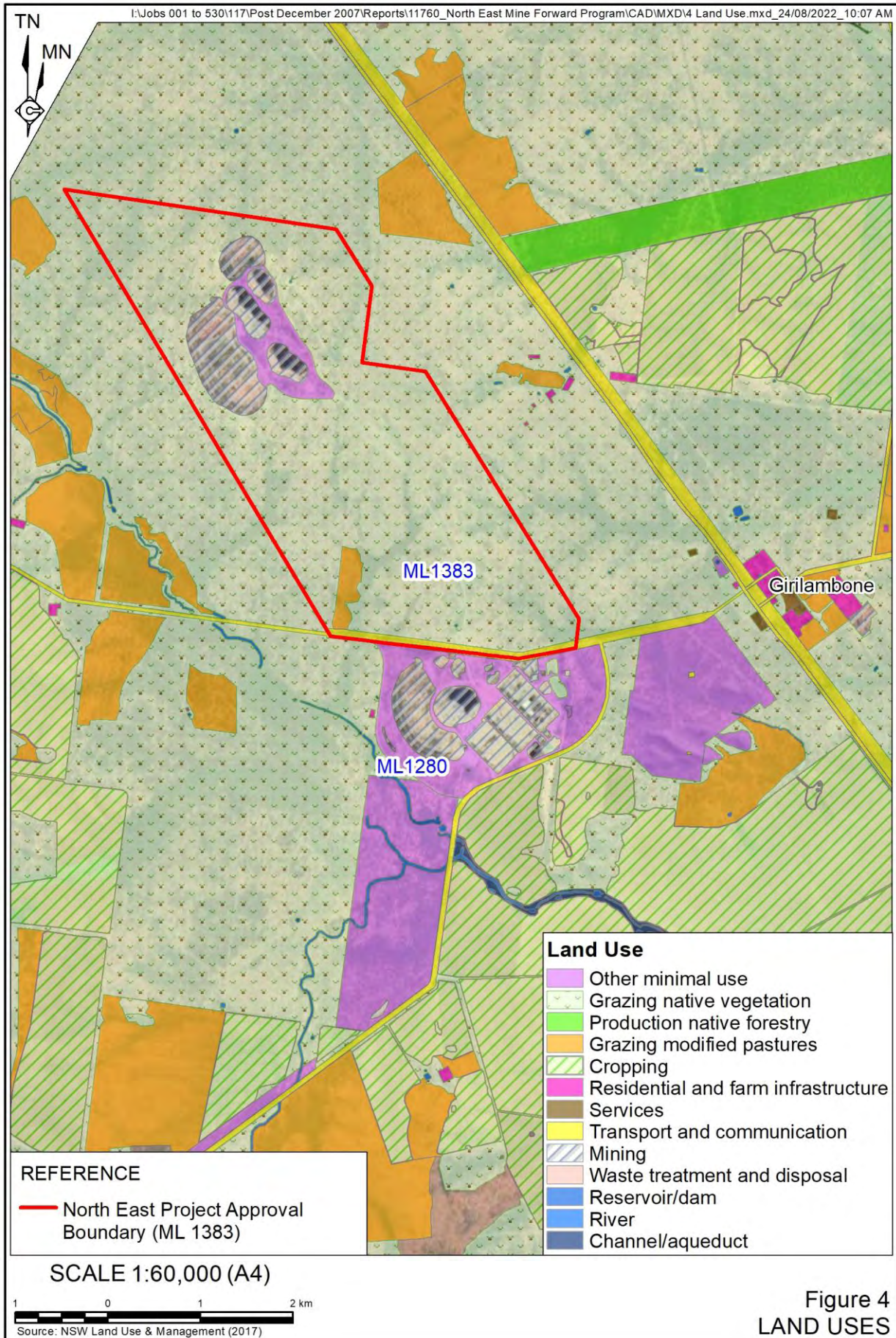


Figure 3
LAND OWNERSHIP



1.3.1 Land Ownership and Land Use Figure

Figure 3 presents land ownership for areas within and surrounding the Mine Site. **Figure 4** presents land uses in the vicinity of the Mine Site. **Figure 5** presents vegetation communities within the Mine Site and the surrounding region. **Figure 6** presents land zoning in the vicinity of the Mine Site.

