



TRITTON RESOURCES PTY LTD

ABN 88 100 095 494

Rehabilitation Management Plan



for the
North East Mine



Prepared by:

RWCorkery&co

August 2022



TRITTON RESOURCES PTY LTD

ABN 88 100 095 494

DRAFT

Rehabilitation Management Plan

for

North East Mine

DRAFT

Prepared for:

Tritton Resources Pty Ltd
ABN: 88 100 095 494

Yarrandale Road
HERMIDALE NSW 2831

Telephone: (02) 6838 1100
Email: info@aerisresources.com.au

Prepared by:

R.W. Corkery & Co. Pty. Limited
Geological & Environmental Consultants
ABN: 31 002 033 712

Telephone: (02) 9985 8511
Email: admin@rwcorkery.com
Postal: PO Box 1796
CHATSWOOD NSW 2057

Sydney | Orange | Townsville

Sydney
Suite 12.01, 1-5 Railway Street
CHATSWOOD NSW 2067

Orange
62 Hill Street
ORANGE NSW 2800

Ref No. 117/63

August 2023

DRAFT



Summary Table

DRAFT

Name of Mine		North East Mine		
RMP Commencement Date		2 August 2022		
Mineral Authorities		ML1383	Expiry Date	13 January 2038
Name of Leaseholder		Tritton Resources Pty Ltd		
Version	Author	Purpose	Approved by	Date of Submission
0.1	A Weihart/N Warren	Draft RMP		
0.2	M Fake/N Warren	Revised Draft RMP		

DRAFT

This Copyright is included for the protection of this document

COPYRIGHT

© R.W. Corkery & Co. Pty Limited 2023
and
© Tritton Resources Pty Ltd 2023

All intellectual property and copyright reserved.

Apart from any fair dealing for the purpose of private study, research, criticism or review, as permitted under the Copyright Act, 1968, no part of this report may be reproduced, transmitted, stored in a retrieval system or adapted in any form or by any means (electronic, mechanical, photocopying, recording or otherwise) without written permission. Enquiries should be addressed to R.W. Corkery & Co. Pty Limited.

DRAFT

Contents

	Page
LIST OF ACRONYMS.....	6
1. INTRODUCTION TO MINING PROJECT	7
1.1 HISTORY OF OPERATIONS.....	8
1.1.1 Mining Activities	8
1.1.2 Rehabilitation	11
1.2 CURRENT DEVELOPMENT CONSENTS, LEASES AND LICENCES	11
1.3 LAND OWNERSHIP AND LAND USE.....	12
1.3.1 Land Ownership and Land Use Figure	15
2. FINAL LAND USE	18
2.1 REGULATORY REQUIREMENTS FOR REHABILITATION.....	18
2.2 FINAL LAND USE OPTIONS ASSESSMENT	18
2.3 FINAL LAND USE STATEMENT	28
2.4 FINAL LAND USE AND MINING DOMAINS	28
2.4.1 Final Land Use Domains.....	28
2.4.2 Mining Domains	30
3. REHABILITATION RISK ASSESSMENT	33
4. REHABILITATION OBJECTIVES AND REHABILITATION COMPLETION CRITERIA	47
4.1 REHABILITATION OBJECTIVES AND REHABILITATION COMPLETION CRITERIA.....	47
4.2 REHABILITATION OBJECTIVES AND REHABILITATION COMPLETION CRITERIA – STAKEHOLDER CONSULTATION	47
5. FINAL LANDFORM AND REHABILITATION PLAN.....	64
5.1 FINAL LANDFORM AND REHABILITATION PLAN	64
6. REHABILITATION IMPLEMENTATION	67
6.1 LIFE OF MINE REHABILITATION SCHEDULE	67
6.2 PHASES OF REHABILITATION AND GENERAL METHODOLOGIES	70
6.2.1 Active Mining Phase	70
6.2.2 Decommissioning.....	85
6.2.3 Landform Establishment	93
6.2.4 Growth Medium Development	96
6.2.5 Ecosystem and Land Use Establishment	98
6.2.6 Ecosystem and Land Use Development.....	102
6.3 REHABILITATION OF AREAS AFFECTED BY SUBSIDENCE.....	104
7. REHABILITATION QUALITY ASSURANCE PROCESS	105
8. REHABILITATION MONITORING PROGRAM	107
8.1 ANALOGUE SITE BASELINE MONITORING	107
8.2 REHABILITATION ESTABLISHMENT MONITORING	109

DRAFT

DRAFT

DRAFT

Contents

DRAFT

Page

8.3	MEASURING PERFORMANCE AGAINST REHABILITATION OBJECTIVES AND REHABILITATION COMPLETION CRITERIA	112
9.	REHABILITATION RESEARCH AND TRIALS	113
9.1	CURRENT REHABILITATION RESEARCH AND TRIALS	113
9.2	FUTURE REHABILITATION RESEARCH AND TRIALS	113
	9.2.1 Seed Balance Strategy	113
	9.2.2 Seed Balance and Procurement Strategy	113
	9.2.3 Post-Closure Water Management Strategy	114
	9.2.4 Land Contamination and Hazard Assessment	114
	9.2.5 Landform Evolution Modelling	115
10.	INTERVENTION AND ADAPTIVE MANAGEMENT	116
10.1	THREATS TO REHABILITATION	116
10.2	TRIGGER ACTION RESPONSE PLAN	116
11.	REVIEW, REVISION AND IMPLEMENTATION	121
12.	REFERENCES	122

DRAFT

APPENDICES

FIGURES

Figure 1	Locality Plans and Mineral Authorities	9
Figure 2	North East - Mine Site Layout	10
Figure 3	Land Ownership	13
Figure 4	Land Uses	14
Figure 5	Vegetation Communities	16
Figure 6	Land Zoning	17
Figure 7	Final Land Use Domains	29
Figure 8	Mining Domains	31
Figure 9	Previously Approved Final Land Use	32
Figure 10	North East - Surface Water Management	82
Figure 11	Rehabilitation Monitoring Sites	108

TABLES

Table 1	Consents, Leases and Licences	12
Table 2	Land Ownership	15
Table 3	Regulatory Requirements for Rehabilitation	19
Table 4	Final Land Use Domains	28

DRAFT

Contents

	Page
Table 5	Mining Domains 30
Table 6	Tritton Consequence Table..... 34
Table 7	Qualitative Likelihood Rating 35
Table 8	Qualitative Risk Rating..... 36
Table 9	Residual Risk Level Action 36
Table 10	Rehabilitation Risk Assessment..... 37
Table 11	Community Consultation Activities 47
Table 12	Rehabilitation Objectives and Completion Criteria 49
Table 13	Waste Rock Emplacement Summary 75
Table 14	Non-Production Waste Management..... 77
Table 15	Requirements for Infrastructure to be Removed or Demolished 86
Table 16	Requirements for Infrastructure to be Retained..... 88
Table 16	Water Management Infrastructure Rehabilitation 93
Table 17	Regional Climate Statistics 97
Table 18	Mine Rehabilitation Species List..... 100
Table 19	Key Roles and Responsibilities..... 105
Table 20	Analogue Reference Sites 109
Table 21	Trigger Action Response Plan 117
Table 22	Rehabilitation Management Plan Review / Amendment Triggers 121
 PLANS	
Plan 1	Final Landform Features 65
Plan 2	North East Mine - Final Landform Contours 66
Plan 3	North East Mine 2022 – 2026 68
Plan 4	North East Mine 2027-2031 69

DRAFT

DRAFT

DRAFT

LIST OF ACRONYMS

AHD	Australian Height Datum	NGO	Non-Government Organisation
ARI	Annual Recurrence Interval	NSW	New South Wales
AS	Australian Standard	PAF	Potentially Acid Forming
CPT	Cone Penetrometer Test	pH	Potential Hydrogen
DA	Development Application	PSM	Pells Sullivan Meynink
DnA	DnA Environmental	RAP	Remedial Action Plan
EIS	Environmental Impact Assessment	RGS	RGS Environmental Pty Ltd
EPL	Environment Protection Licence	RMP	Rehabilitation Management Plan
GCC	Girilambone Copper Company	ROM	Run of mine
HDPE	High-Density Polyurethane	RWC	R.W. Corkery & Co. Pty Limited
HLP	Heap Leach Pad	RWI	Restricted Work Injury
LEM	Landform Evolution Modelling	S%	Sulphate content
LFA	Landscape Function Analysis	SAB	Soda Ash Brine
LTI	Lost Time Injury	TARP	Trigger Action Response Plan
MCP	Mine Closure Plan	TSF	Tailings Storage Facility
ML	Mining Lease	WRE	Waste Rock Emplacement
MOP	Mining Operations Plan		
MTI	Medical Treatment Injury		
NAF	Non-Acid Forming		
NAG	Net Acid Generation		
NAPP	Net Acid Producing Potential		
NATA	National Association of Testing Authorities		
NEPM	National Environmental Protection Measure		

1. Introduction to Mining Project

This *Rehabilitation Management Plan* (RMP) has been prepared by R.W. Corkery & Co. Pty. Limited (RWC) on behalf of Tritton Resources Pty Ltd (the “Company”), a wholly owned subsidiary of Aeris Resources Limited for the North East Copper Mine (the “Mine”). The Mine is located approximately 6km northwest of the village of Girilambone within the Bogan Local Government Area (LGA) in central west NSW (**Figure 1**).

The Mine is one of four operational mines within the vicinity of Girilambone that are owned and operated by the Company. The Mine, together with the Tritton Copper Mine, the Murrawombie Copper Mine, and the Avoca Tank Mine, forms the Tritton Copper Operations. In general, all mines within the Tritton Copper Operations are managed in parallel where practicable; as such, many existing assessments, approvals, and management plans may apply to multiple or all mines within the Tritton Copper Operations. This RMP relates only to management of rehabilitation within the Mine Site (i.e., the North East Copper Mine).

The RMP is intended to provide a summary of current plans for progressive and final rehabilitation of the Mine and a practical guide to rehabilitation planning for site personnel. The RMP provides the following information.

- Introduction to the Mine (Section 1).
- Final land use information including regulatory requirements (Section 2).
- A summary of the current rehabilitation risk assessment outcomes (Section 3).
- A statement of the Company’s rehabilitation objectives and the completion criteria that will be satisfied before rehabilitation is considered complete (Section 4).
- Final landform plans (Section 5).
- An overview of the planned implementation of progressive and final rehabilitation (Section 6).
- A summary of how rehabilitation quality will be maintained (Section 7).
- An overview of intended rehabilitation monitoring (Section 8) and ongoing research and trials (Section 9).
- A summary of the Company’s management approach including a trigger action response plan (Section 10) and procedures for review and update of the plan (Section 11).

This RMP has been prepared in accordance with the following documents and guidelines.

- *Form and Way: Rehabilitation Management Plan for Large Mines (July 2021).*
- *Form and Way: Rehabilitation Objectives, Rehabilitation Completion Criteria and Final Landform and Rehabilitation Plan for Large Mines (July 2021).*
- *Guideline 1: Rehabilitation Risk Assessment (July 2021).*

DRAFT

- *Guideline 2: Rehabilitation Records (July 2021).*
- *Guideline 3: Rehabilitation Controls (July 2021).*
- *Guideline 5: Rehabilitation Objectives and Rehabilitation Completion Criteria (July 2021).*

1.1 History of Operations

The Mine is located approximately 6km northwest of the village of Girilambone and operates under Development Application (DA) 6/95 and Mining Lease (ML) 1383 and commenced operations in 1996. The development consent was issued by Bogan Shire Council and does not contain an expiry date. Relinquishment of ML1383 is expected to occur during 2034. The Mine operates in accordance with the conditions of development consent, the mining lease and Environment Protection Licence (EPL) 4501.

For the purpose of this document, the area covered by ML1383 is referred to as the “Mine Site” (**Figure 2**).

1.1.1 Mining Activities

Historical Mining Activities

The Girilambone copper deposits (located within and in the vicinity of the Tritton Copper Operations) were first discovered in 1879 with mining commencing in 1881. Ownership of the deposits has changed several times throughout the various stages of mining operations.

Mining within the Mine Site under DA 6/95 commenced in 1996 by the Girilambone Copper Company (GCC), a Joint Venture between Tritton Resources Pty Ltd (60%) and Nord Pacific Ltd (40%). The operations are now owned by Tritton Resources Pty Ltd, is a wholly owned subsidiary of Aeris Resources Limited (Aeris).

The North East Copper Mine

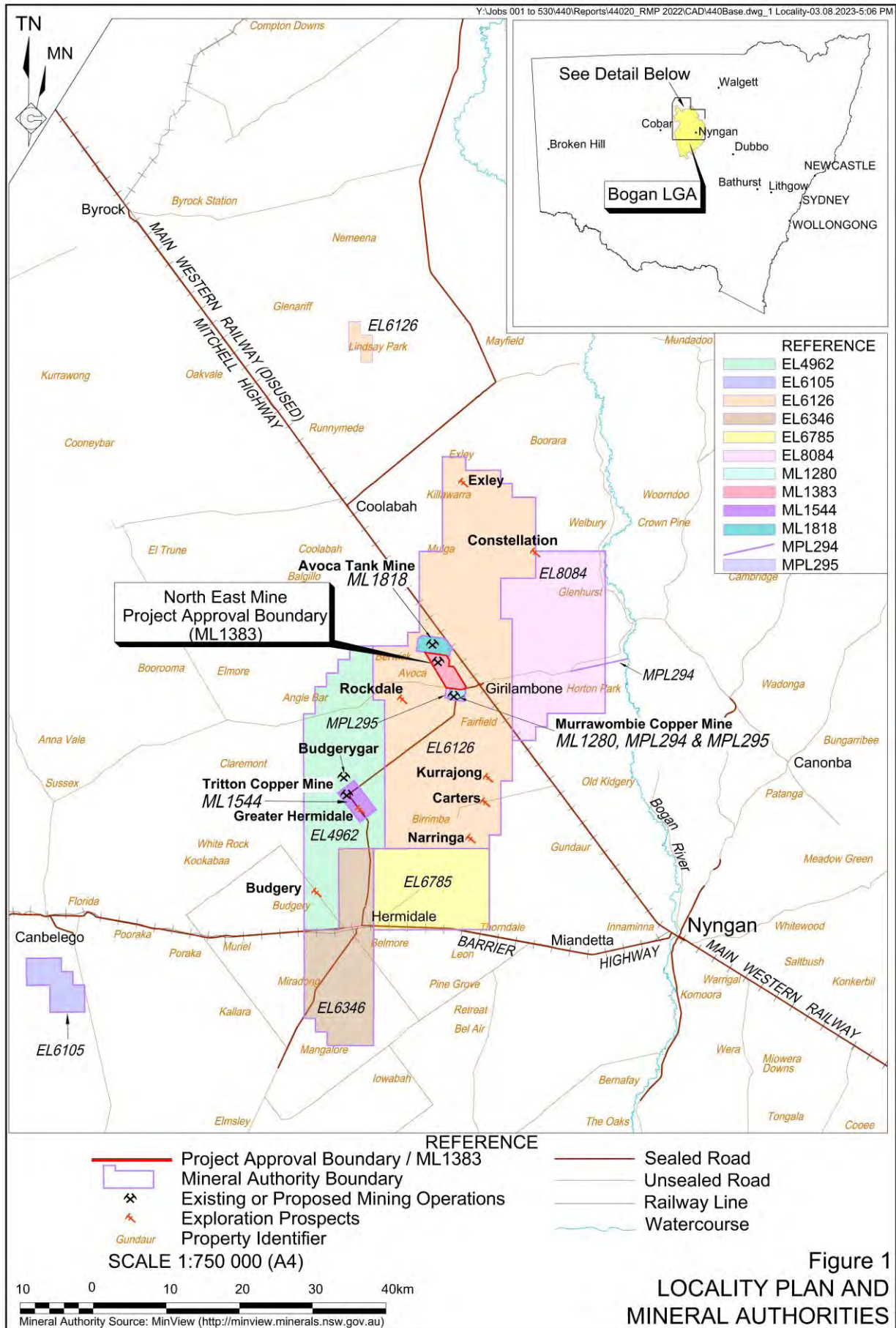
The Mine is located approximately 6km northwest of the village of Girilambone and operates under Development Application (DA) 6/95 and Mining Lease (ML) 1383 and commenced operations in 1996. The Mine Site was developed and operated in parallel with the Murrawombie Mine. During operations, the Murrawombie and North East Mines were also known as the Girilambone Mine and Girilambone North Mine, respectively.

Three open cut pits were developed during surface mining operations, namely Larsen’s Pit, Northeast Pit and Hartmans Pit (see **Figure 2**). Surface mining within the Mine Site ceased April 2000. To process the oxide ore, the extracted ore was transported to the nearby Murrawombie Mine, crushed and placed on heap leach pads where the contained copper was leached using sulphuric acid and recovered using solvent extraction/electrowinning.

From 2007, mining was undertaken by underground extraction methods with mined ore transported to the Tritton Copper Mine for processing. This continued until August 2016 when operations were suspended and the North East Mine was placed on care and maintenance. North East Mine have recently re-started to do a trial to mine some of the high grade copper remaining in some of the pillars, if the trial is successful the rest of the pillars will be mined over a period of roughly 3 years as and when equipment from Murrawombie and Avoca Tank is available.

DRAFT

DRAFT



DRAFT

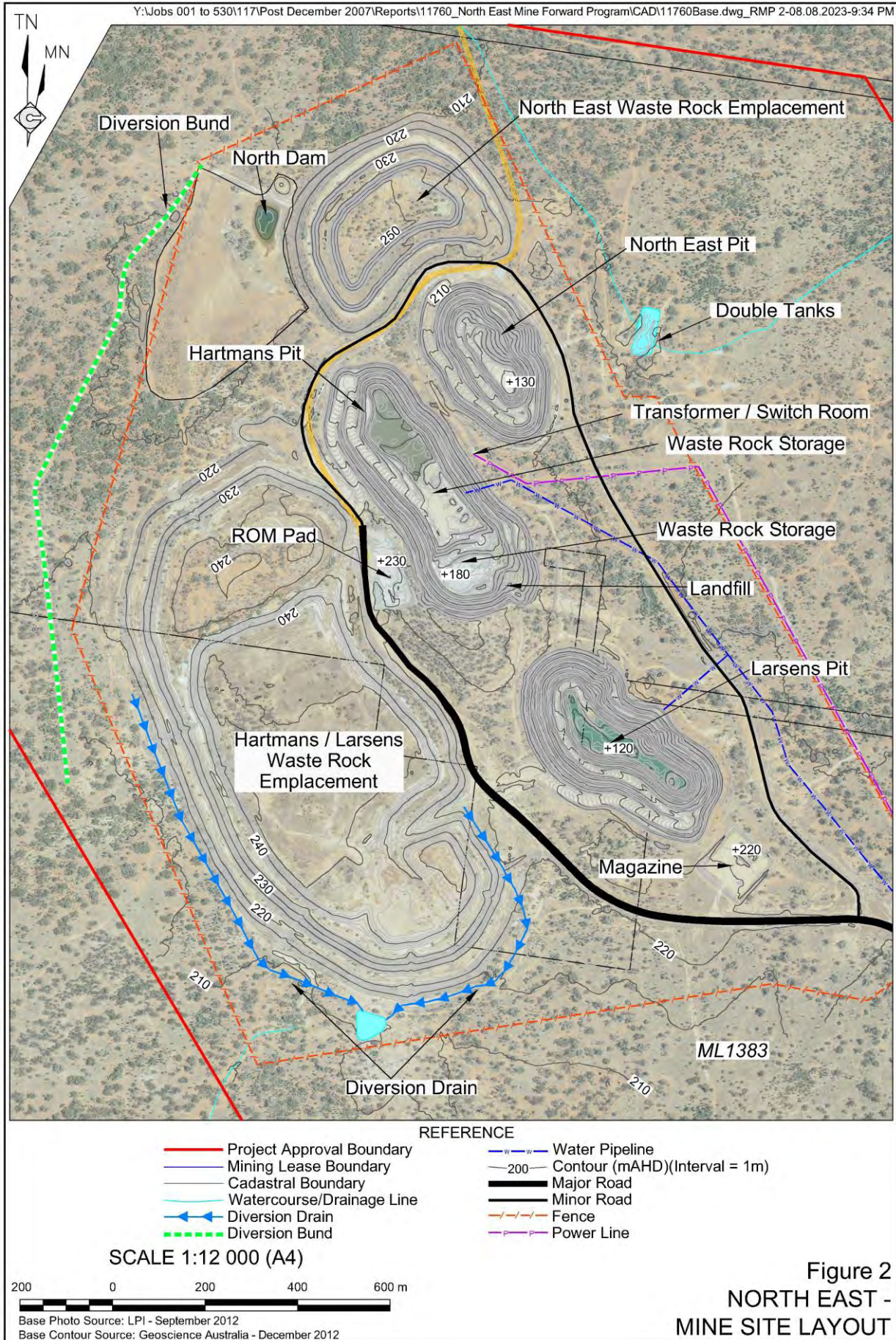
DRAFT

DRAFT

DRAFT

DRAFT

DRAFT



The Avoca Tank Mine

The Avoca Tank Mine (also known as the ‘Avoca Tank Project’) is located immediately north of the Mine Site and within ML1818 (see **Figure 2**). Development consent for the Avoca Tank Mine was granted 2016 and subsequently modified 2021. Initially an underground exploration drive from existing underground workings located within ML1383, the Avoca Tank Mine consists of an underground production drive and associated workings accessed via the existing portal within Hartmans Pit. Ore is transported through the Mine Site to the Tritton Copper Mine for processing. Excess waste rock mined from the Avoca Tank Mine is approved to be placed within the Hartmans Pit, as well as for use as backfill for stabilisation of pit walls.

Based on the above, certain aspects of this RMP relate to rehabilitation risks and opportunities associated with the Avoca Tank Mine, and this RMP should be read in conjunction with the RMP for the Avoca Tank Mine where relevant.

1.1.2 Rehabilitation

Figure 2 shows the current layout of the Mine Site, including where mine disturbed areas have been rehabilitated. In summary, decommissioning and rehabilitation of various surface infrastructure and associated disturbance was progressively completed during and following the cessation of mining. Current areas of disturbance are either associated with that required to support the care and maintenance of the Mine Site, the continuation of mining operations within the adjacent Avoca Tank Mine, or with progressive rehabilitation and maintenance of prior disturbance.

Progressive rehabilitation on the Hartmans/Larsens and North East Waste Rock Emplacements began in 1994 with the majority of the revegetation being completed by 2000. During 2014, the Company erected an exclusion fence of 6.7km in length and 1.8m in height around existing rehabilitation on the waste rock emplacements to exclude macropods and feral goats from the revegetating surface. Although animals could not be limited to desired numbers, vegetation coverage has increased with a significant decrease in small tree and shrub mortality. Minor rehabilitation activities have continued since that time in response to rehabilitation monitoring.

Rehabilitation monitoring and reporting focusing on the Hartmans/Larsens and North East Waste Rock Emplacements have been undertaken at the Mine Site with the most recent report completed in September 2020. Ecological function on the waste rock emplacements is considered to be fairly poor, something that would have been exacerbated by the recent drought. The reporting includes a range of recommendations to improve rehabilitation outcomes. In response to the recent report the Company began an ongoing targeted trapping program to reduce goat numbers.

1.2 Current Development Consents, Leases and Licences

Table 1 presents the consents, authorisations and licences held in relation to the Mine.

Table 1
Consents, Leases and Licences

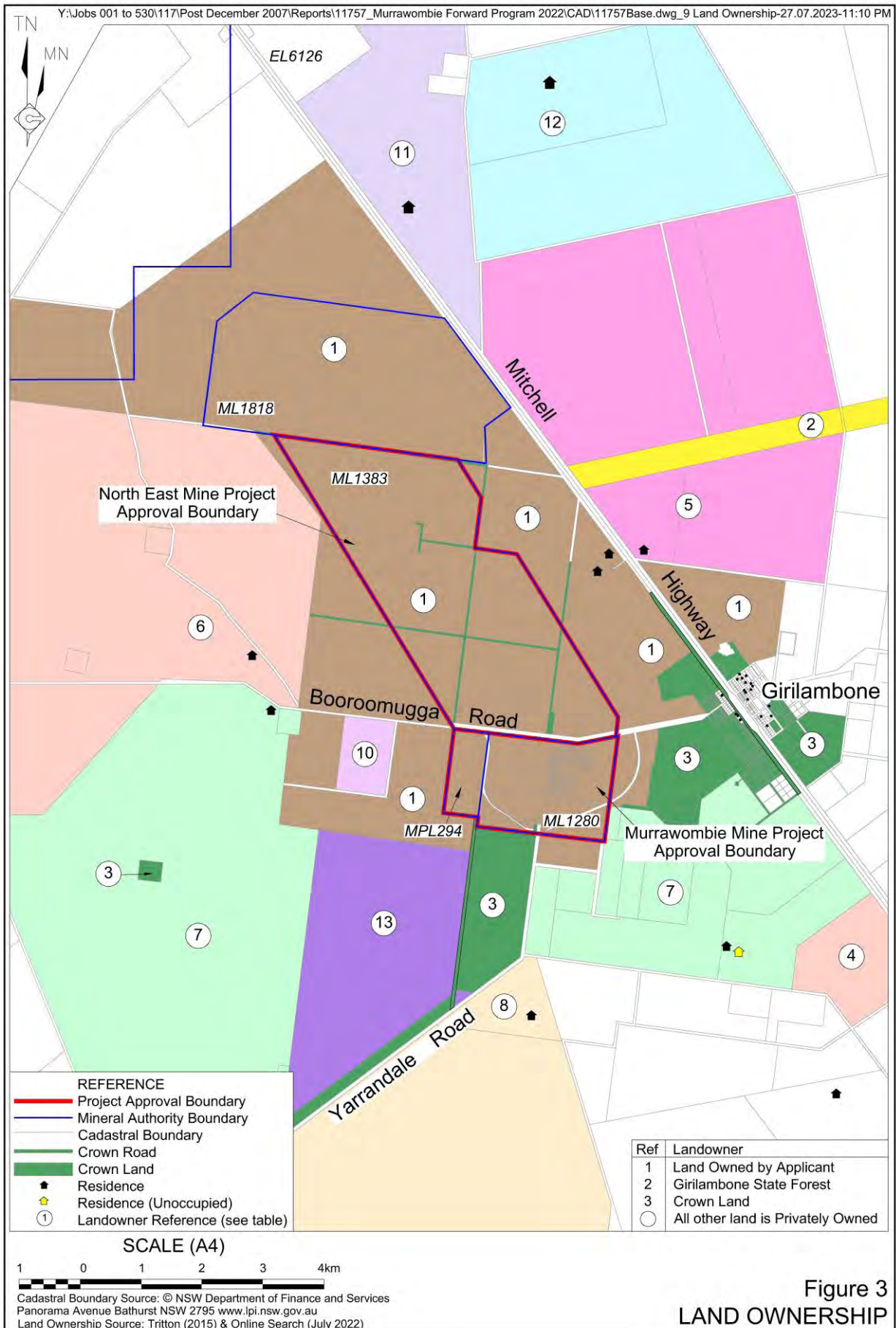
Consent/Licence	No.	Grant Date	Expiry Date	Purpose of Approval
Development Consent	6/95	25/10/1995	N/A	Original Development Approval for the North East Copper Mine
	MOD1	26/07/2007	N/A	Modified under DA 42/2007M to permit underground mining activities.
	MOD 2	02/07/2010	N/A	Modified under DA 18/2010 to permit construction of a ROM Pad.
	MOD 3	16/08/2011	N/A	Modified under DA 2011/005 to extend the approved ROM Pad.
	49/2007	13/09/2007	N/A	Ancillary works associated with surface facilities.
Mining Lease	1383	13/01/1996	13/01/2038	Mining at North East Copper Mine. Renewed on 16 October 2017.
Environment Protection Licence	4501	13/12/1999	N/A	Mining (other than coal).
Note 1: This approval permitted a combined, maximum total of 1Mtpa of copper ore to be transported from the North East Open Cuts and Underground Mine and the Murrawombie Open Cut and Underground Mine to the Tritton Copper Mine.				
Source: Tritton Resources Pty Ltd				

1.3 Land Ownership and Land Use

Table 2 presents the land ownership for land within Mine Site. In summary, land within the Mine Site consists predominantly of freehold land owned by the Company with the exception of Booroomugga Road reserve at the southern boundary (**Figure 3**). The closest residence is located approximately between 1.8km to the east of the Mining Lease boundary, and approximately 3.2km to the east of the principal disturbance areas of the Mine Site. Girilambone Village is located approximately 1.7km to 4.8km the southeast of the Mining Lease boundary and principal disturbance areas of the Mine Site, respectively. These residences are displayed on **Figure 3**.

Land uses within and surrounding the Mine Site include the following (**Figure 4**).

- Mining – the approved (development / construction commenced) operation to the north (Avoca Tank) and south (Murrawombie).
- Agriculture – land within and surrounding the Mine Site has been or is currently being used for agricultural purposes, principally, sheep and cattle grazing and cropping. A range of agricultural properties include residences.
- Native vegetation forestry – The Girilambone State Forest occupies an area to the east of the Mine Site.
- Transportation – a range of State and local roads exist in the vicinity of the Mine Site, including Mitchell and Barrier Highways. The disused Main Western Railway is located to the east of the Mitchell Highway.
- Village residential – the village of Girilambone is located approximately 1.7km to the southeast of the Mine Site.



DRAFT

DRAFT

DRAFT

Figure 3
 LAND OWNERSHIP

DRAFT

DRAFT

DRAFT

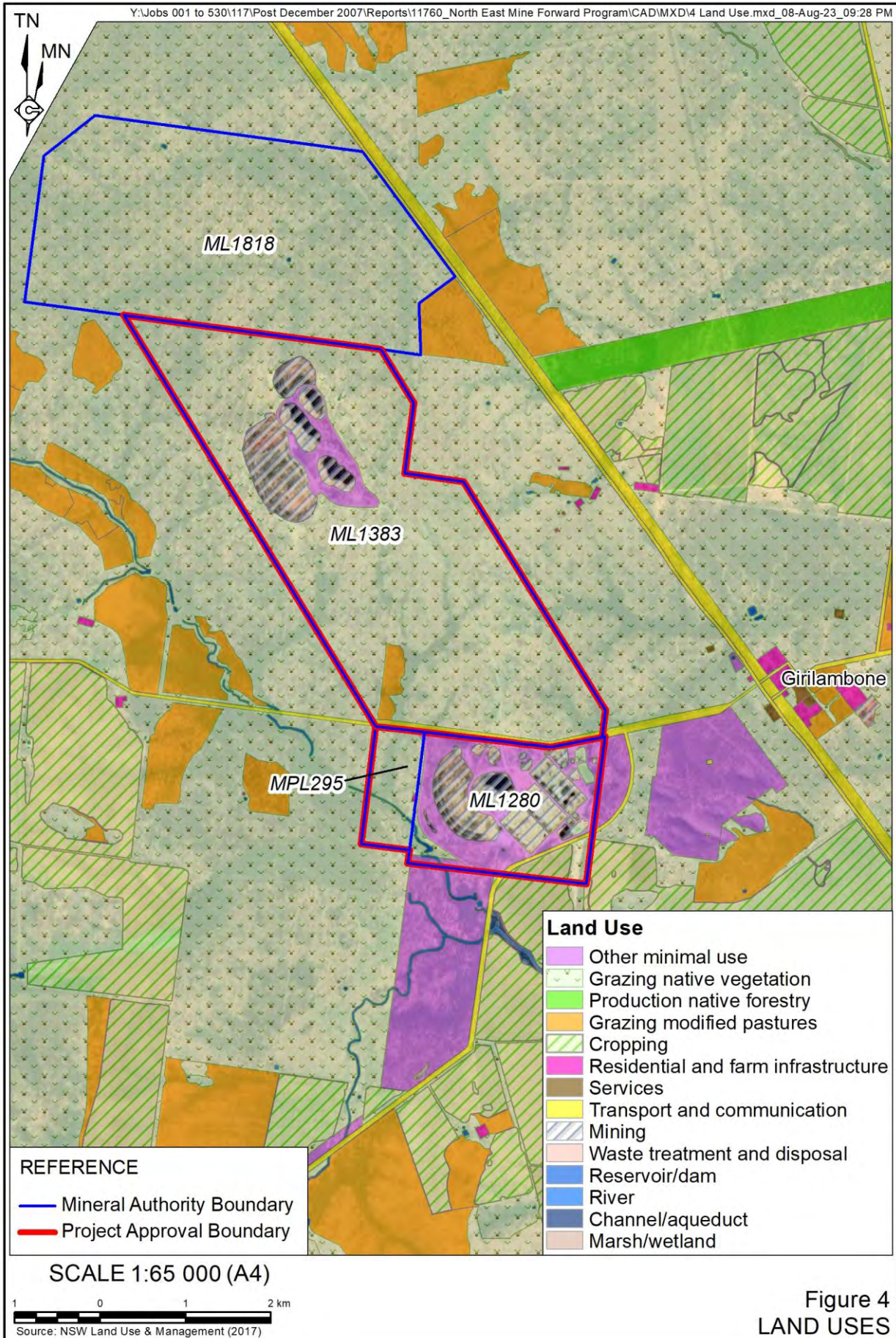


Figure 4
LAND USES

Table 2
Land Ownership

Lot	Deposited Plan	Tenure	Owner	Leases
Mine Site				
16, 135	751315	Freehold	Straits Mining	ML1383
142, 144	751315	Freehold	Straits Mining	ML1383, ML1818
11, 13, 14, 30, 40, 51, 138, 139, 140, 141	751315	Freehold	Tritton Resources	ML1383
1	827919	Freehold	Tritton Resources	ML1383
12	858163	Freehold	Tritton Resources	ML1383
1	46859	Crown Land	The State of NSW	ML1383, ML1818
Land Adjacent to the Mine Site				
8	751342	Freehold	Private Individual	ML1383
1/7, 1/8, 11/15, 1/16, 2/16, 3/16, 4/16, 5/16, 6/16, 7/16, 8/16, 9/16, 10/16	986	Freehold	Straits Mining	ML1383
1	253228	Freehold	Straits Mining	ML1383
11	858163	Freehold	Straits Mining	ML1383, ML1280
22	861603	Freehold	Straits Mining	ML1383, ML1280
300, 302, 301	1161667	Freehold	Straits Mining	ML1383
300, 301	1161667	Freehold	Straits Mining	ML1383, MPL294
28, 56	751315	Freehold	Straits Mining	ML1383
1	822427	Freehold	Tritton Resources	ML1383
3	751315	Freehold	Tritton Resources	ML1383

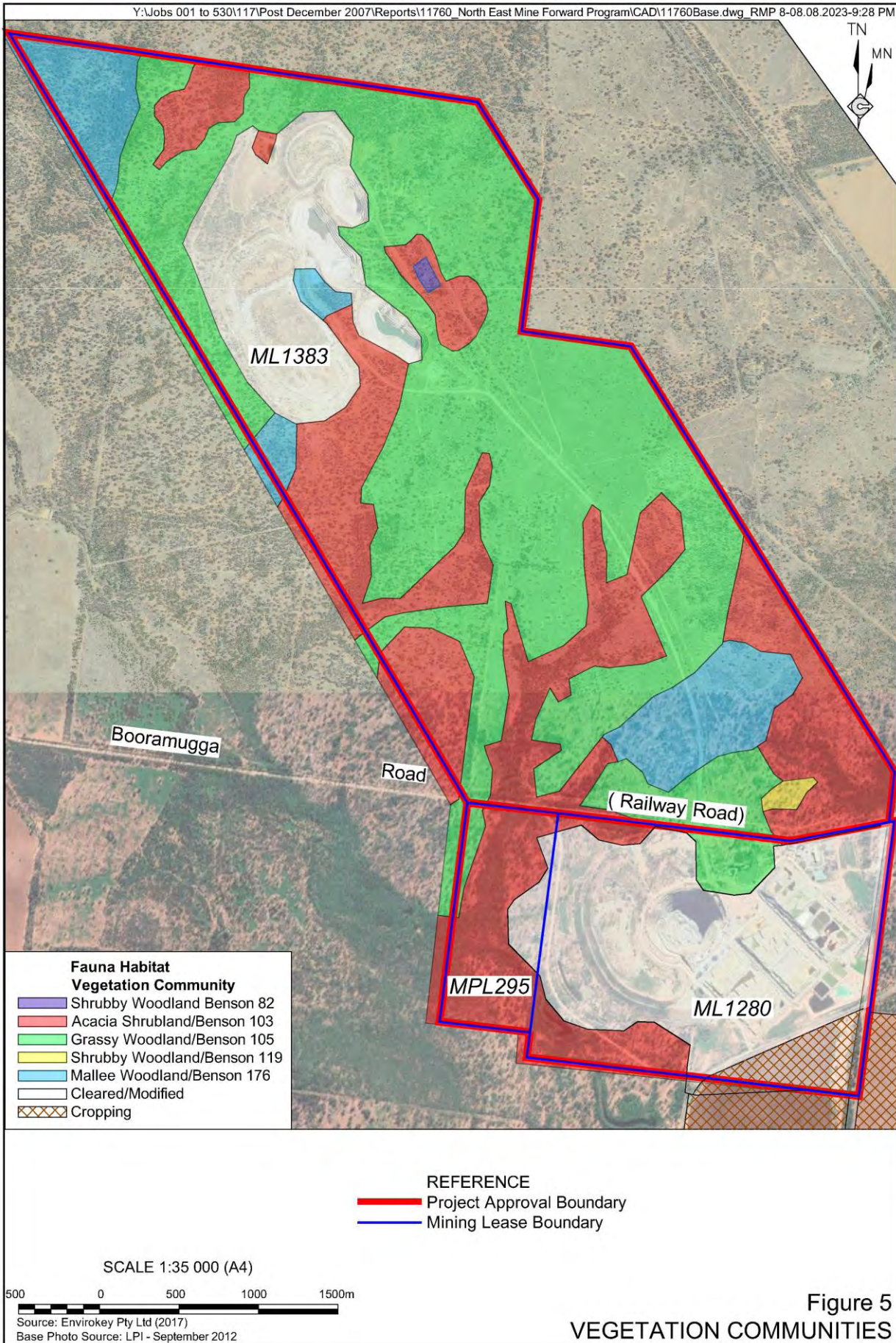
Proposed final land uses for the Mine Site are detailed in Section 2 of this RMP. In summary, it is proposed that final land uses will include mixed native ecosystems that would generally be capable of supporting light agricultural grazing.

1.3.1 Land Ownership and Land Use Figure

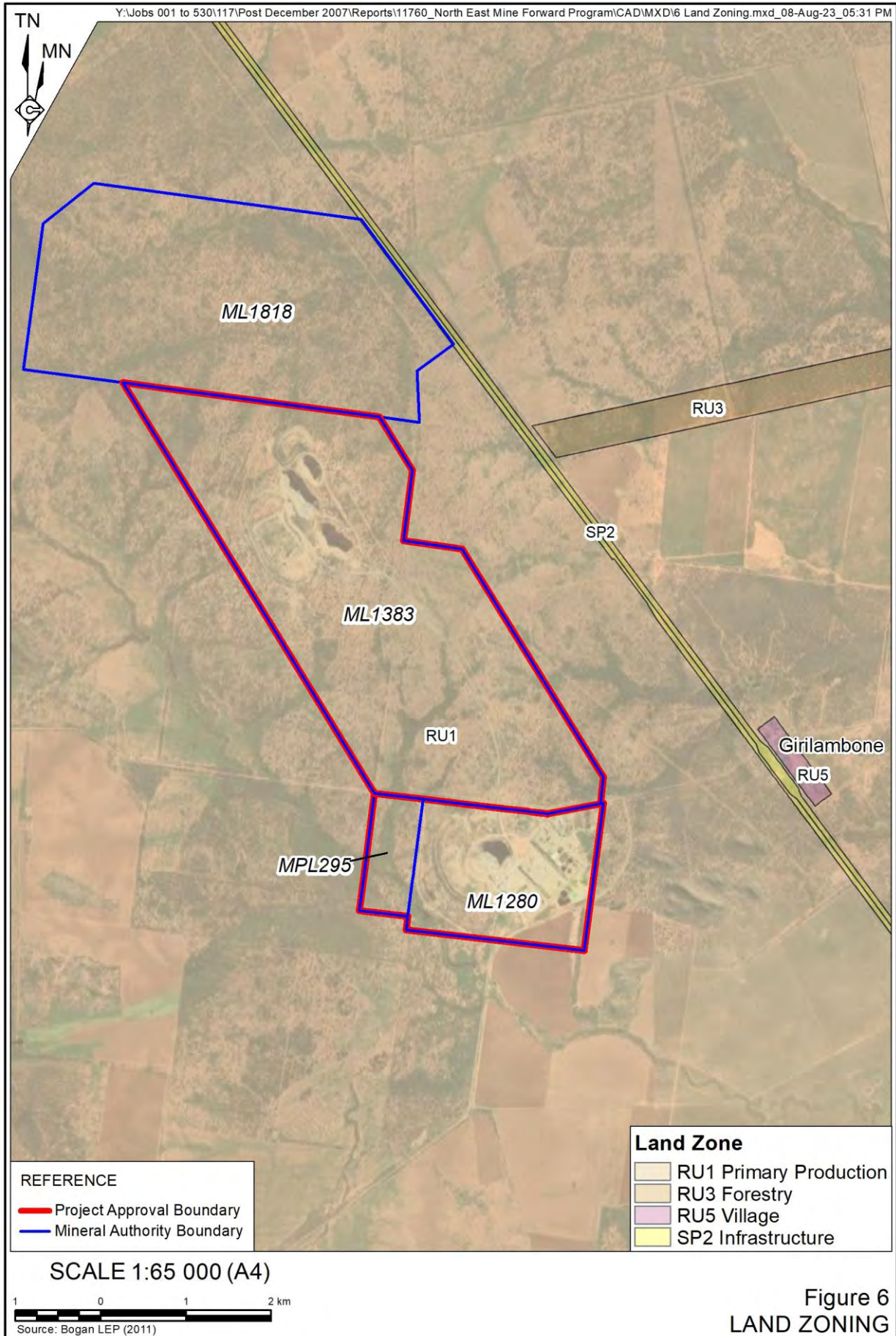
Figure 3 presents land ownership for areas within and surrounding the Mine Site. **Figure 4** presents land uses in the vicinity of the Mine Site. **Figure 5** presents vegetation communities within the Mine Site and the surrounding region. **Figure 6** presents land zoning in the vicinity of the Mine Site.

DRAFT

DRAFT



DRAFT



DRAFT

DRAFT

DRAFT