

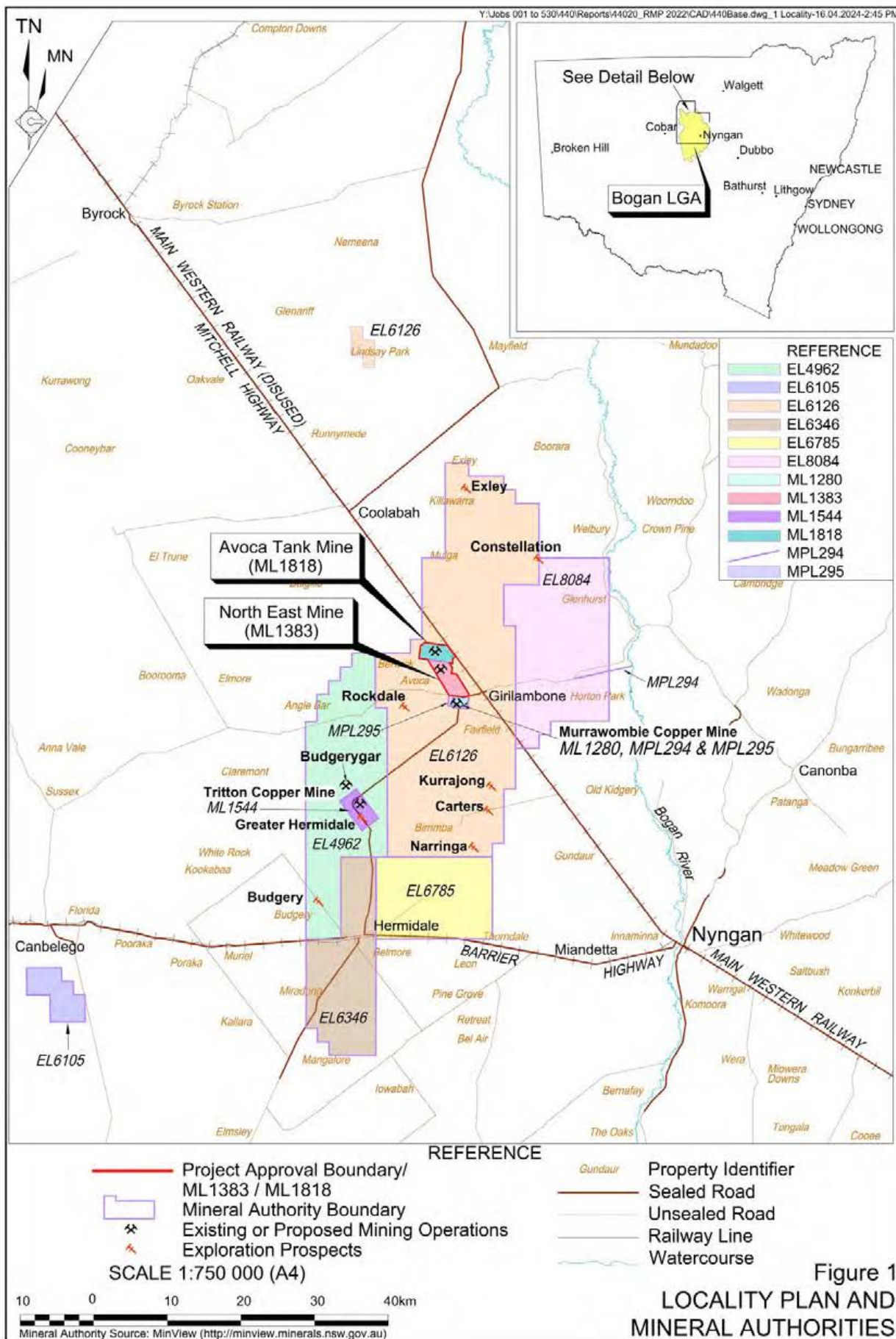
# 1. Introduction to Mining Project

This *Rehabilitation Management Plan* (RMP) has been prepared by R.W. Corkery & Co. Pty. Limited (RWC) on behalf of Tritton Resources Pty Ltd (the “Company”), a wholly owned subsidiary of Aeris Resources Limited for the North East Copper Mine and the Avoca Tank Project. For the purposes of this document, they are collectively referred to as the “Mine” unless specified otherwise.. The Mine is located approximately 6km northwest of the village of Girilambone within the Bogan Local Government Area (LGA) in central west NSW (**Figure 1**).

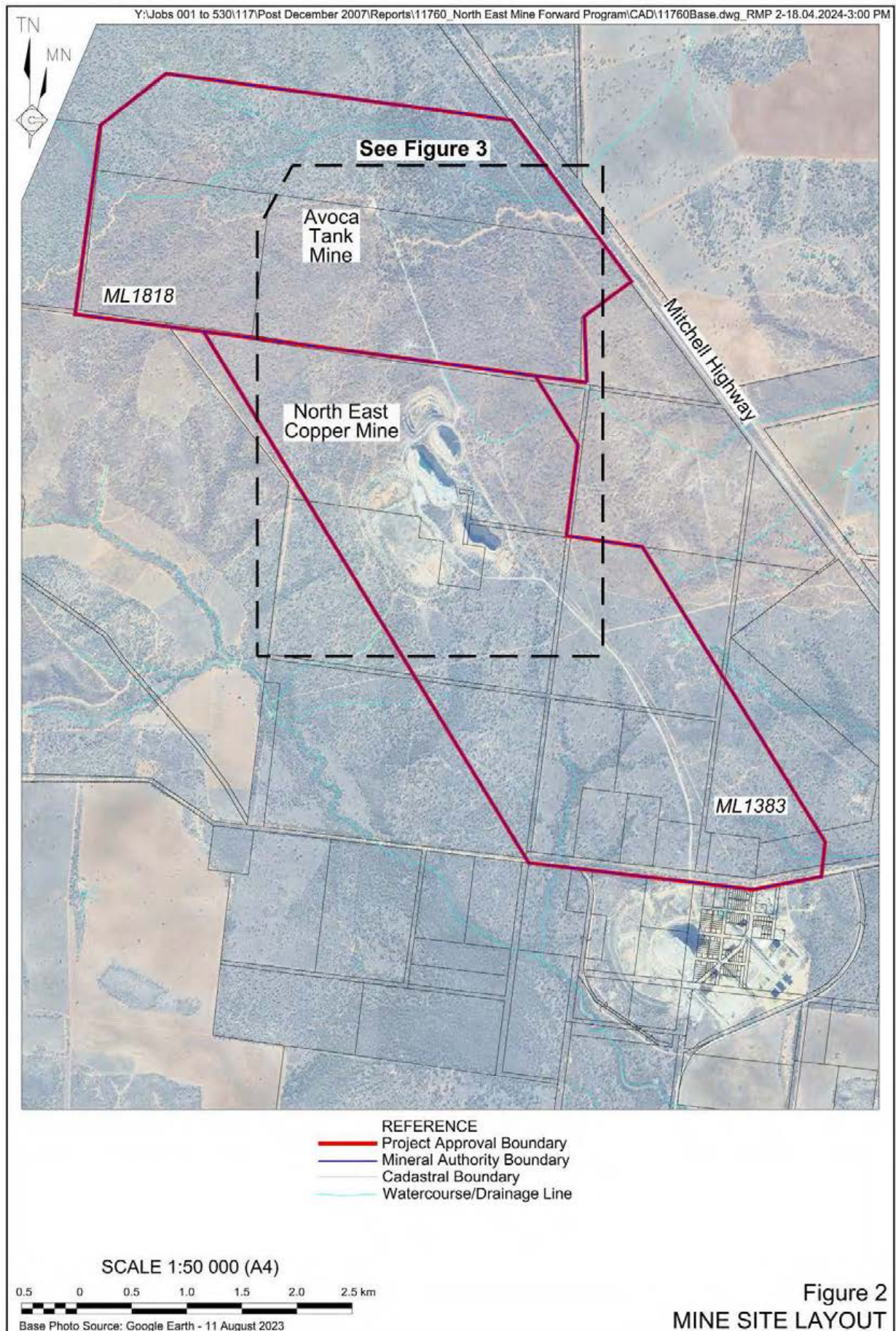
The Mine consists of two of four operational mines within the vicinity of Girilambone that are owned and operated by the Company. The Mine, together with the Tritton Copper Mine and the Murrawombie Copper Mine, forms the Tritton Copper Operations. In general, all mines within the Tritton Copper Operations are managed in parallel where practicable; as such, many existing assessments, approvals, and management plans may apply to multiple or all mines within the Tritton Copper Operations. This RMP relates only to management of rehabilitation within the Mining Leases for the Mine, referred hereafter as the Mine Site (see **Figure 2**).

The RMP is intended to provide a summary of current plans for progressive and final rehabilitation of the Mine and a practical guide to rehabilitation planning for site personnel. The RMP provides the following information.

- Introduction to the Mine (Section 1).
- Final land use information including regulatory requirements (Section 2).
- A summary of the current rehabilitation risk assessment outcomes (Section 3).
- A statement of the Company’s rehabilitation objectives and the completion criteria that will be satisfied before rehabilitation is considered complete (Section 4).
- Final landform plans (Section 5).
- An overview of the planned implementation of progressive and final rehabilitation (Section 6).
- A summary of how rehabilitation quality will be maintained (Section 7).
- An overview of intended rehabilitation monitoring (Section 8) and ongoing research and trials (Section 9).
- A summary of the Company’s management approach including a trigger action response plan (Section 10) and procedures for review and update of the plan (Section 11).







This RMP has been prepared in accordance with the following documents and guidelines.

- *Form and Way: Rehabilitation Management Plan for Large Mines (July 2021).*
- *Form and Way: Rehabilitation Objectives, Rehabilitation Completion Criteria and Final Landform and Rehabilitation Plan for Large Mines (July 2021).*
- *Guideline 1: Rehabilitation Risk Assessment (July 2021).*
- *Guideline 2: Rehabilitation Records (July 2021).*
- *Guideline 3: Rehabilitation Controls (July 2021).*
- *Guideline 5: Rehabilitation Objectives and Rehabilitation Completion Criteria (July 2021).*

## 1.1 History of Operations

### 1.1.1 North East Copper Mine

The North East Copper Mine is located approximately 6km northwest of the village of Girilambone and operates under Development Application (DA) 6/95 and Mining Lease (ML) 1383. Operations commenced during 1996. The development consent was issued by Bogan Shire Council and does not contain an expiry date. Relinquishment of ML1383 is expected to occur during 2034.

### 1.1.2 Avoca Tank Project

The Avoca Tank Project is located immediately north of the North East Copper Mine and operates under DA 19/2015/004/002 and ML 1818. Development consent was first granted during 2016 and expires 2026. Relinquishment of ML1818 is expected to occur during 2034.

### 1.1.3 Mining Activities

#### Historical Mining Activities

The Girilambone copper deposits (located within and in the vicinity of the Tritton Copper Operations) were first discovered in 1879 with mining commencing in 1881. Ownership of the deposits has changed several times throughout the various stages of mining operations.

Mining within the Mine Site under DA 6/95 commenced in 1996 by the Girilambone Copper Company (GCC), a Joint Venture between Tritton Resources Pty Ltd (60%) and Nord Pacific Ltd (40%). The operations are now owned by Tritton Resources Pty Ltd, is a wholly owned subsidiary of Aeris Resources Limited (Aeris).

#### The North East Copper Mine

The North East Copper Mine was developed and operated in parallel with the Murrawombie Copper Mine. During operations, the Murrawombie and North East Mines were also known as the Girilambone Mine and Girilambone North Mine, respectively.



Three open cut pits were developed during surface mining operations, namely Larsen's Pit, Northeast Pit and Hartmans Pit (see **Figures 2 and 3**). Surface mining within the Mine Site ceased April 2000. To process the oxide ore, the extracted ore was transported to the nearby Murrawombie Mine, crushed and placed on heap leach pads where the contained copper was leached using sulphuric acid and recovered using solvent extraction/electrowinning.

From 2007, mining was undertaken by underground extraction methods with mined ore transported to the Tritton Copper Mine for processing. This continued until August 2016 when operations were suspended and the North East Mine was placed on care and maintenance. Underground mining recommenced during 2023 and is expected to continue until 2026.

### The Avoca Tank Project

The Avoca Tank Project is located immediately north of the North East Mine Site and within ML1818 (see **Figures 2 and 3**). Development consent for the Avoca Tank Project was granted 2016 and subsequently modified 2021. Initially an underground exploration drive from existing underground workings located within ML1383, the Avoca Tank Project consists of an underground production drive and associated workings accessed via the existing portal within Hartmans Pit. Ore is transported through the Mine Site to the Tritton Copper Mine for processing. Excess waste rock mined from the Avoca Tank Project is approved to be placed within the Hartmans Pit, as well as for use as backfill for stabilisation of pit walls.

#### 1.1.4 Rehabilitation

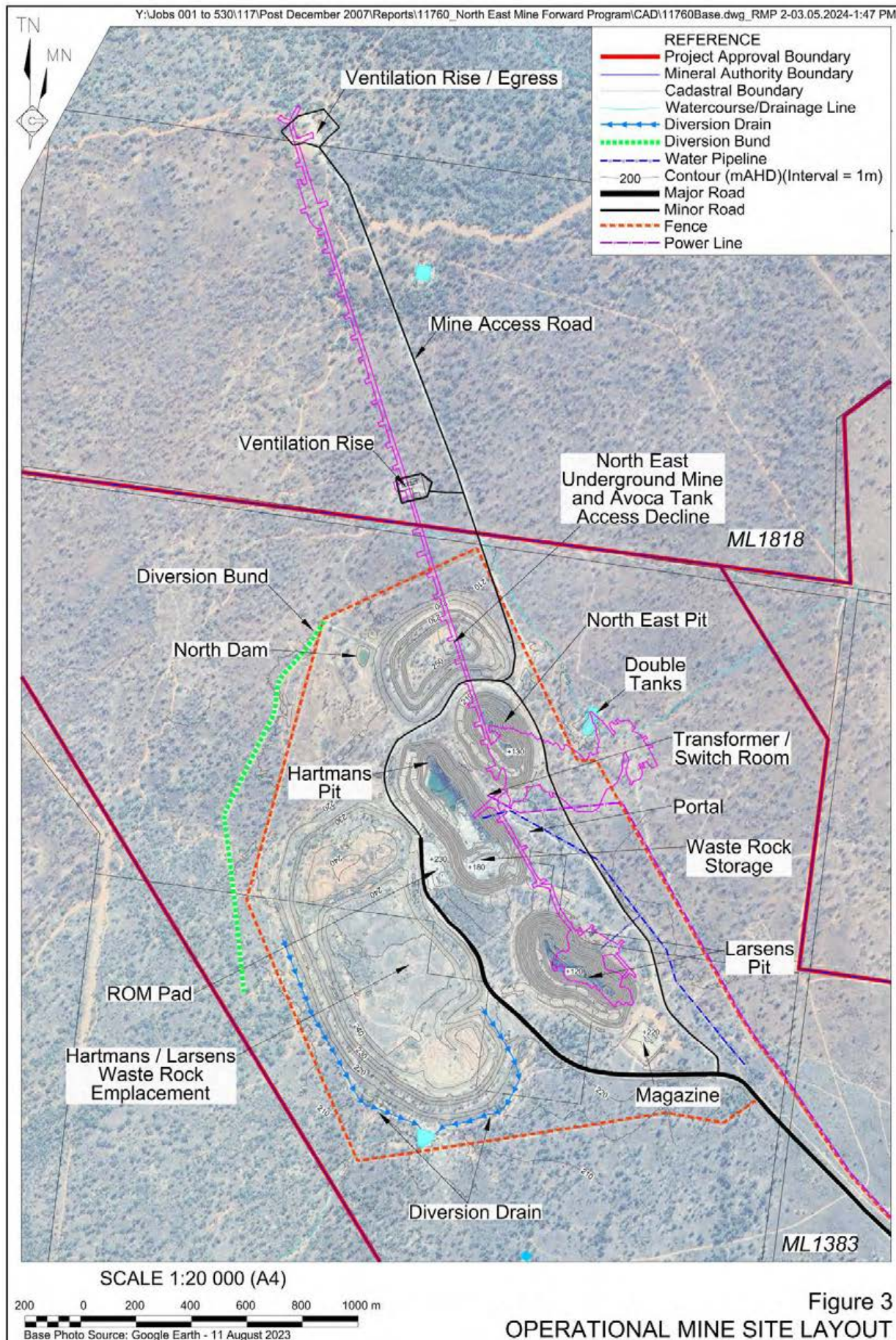
**Figure 3** shows the current layout of the Mine Site, including where mine disturbed areas have been rehabilitated. In summary, decommissioning and rehabilitation of various surface infrastructure and associated disturbance was progressively completed during and following the cessation of mining. Current areas of disturbance are either associated with that required to support the ongoing underground mining operations within the Mine Site or with progressive rehabilitation and maintenance of prior disturbance.

Progressive rehabilitation on the Hartmans/Larsens and North East Waste Rock Emplacements began in 1994 with the majority of the revegetation being completed by 2000. During 2014, the Company erected an exclusion fence of 6.7km in length and 1.8m in height around existing rehabilitation on the waste rock emplacements to exclude macropods and feral goats from the revegetating surface. Although animals could not be limited to desired numbers, vegetation coverage has increased with a significant decrease in small tree and shrub mortality. Minor rehabilitation activities have continued since that time in response to rehabilitation monitoring.

Rehabilitation monitoring and reporting focusing on the Hartmans/Larsens and North East Waste Rock Emplacements have been undertaken at the Mine Site with the most recent report completed in September 2020. Ecological function on the waste rock emplacements is considered to be fairly poor, something that would have been exacerbated by the recent drought. The reporting includes a range of recommendations to improve rehabilitation outcomes. In response to the recent report the Company began an ongoing targeted trapping program to reduce goat numbers.

Other than rehabilitation of construction-related disturbances, no rehabilitation of any mining-related disturbances has occurred within ML1818.





## 1.2 Current Development Consents, Leases and Licences

**Table 1** presents the consents, authorisations and licences held in relation to the Mine.

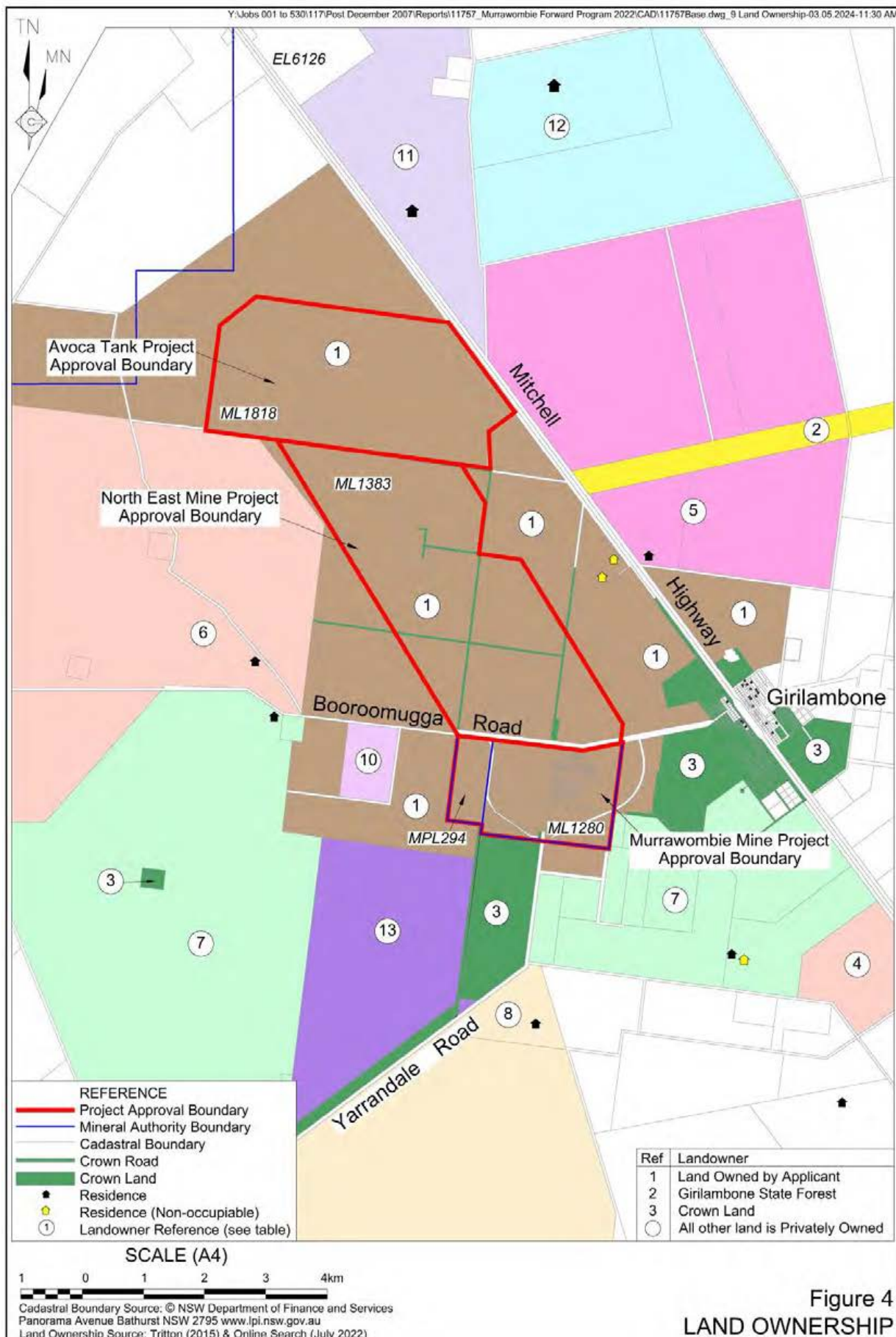
**Table 1**  
**Consents, Leases and Licences**

Consent/Licence	No.	Grant Date	Expiry Date	Purpose of Approval
Development Consent (North East Copper Mine_	6/95	25/10/1995	N/A	Original Development Approval for the North East Copper Mine
	MOD1	26/07/2007	N/A	Modified under DA 42/2007M to permit underground mining activities.
	MOD 2	02/07/2010	N/A	Modified under DA 18/2010 to permit construction of a ROM Pad.
	MOD 3	16/08/2011	N/A	Modified under DA 2011/005 to extend the approved ROM Pad.
	49/2007	13/09/2007	N/A	Ancillary works associated with surface facilities.
Development Consent (Avoca Tank Project)	DA 10/2015/004/001	10/10/2016	N/A	Original Development Application for the Avoca Tank Project
	DA 19/2015/004/002	07/10/2021	07/10/2026	Modified under DA 2015/004 to alter mine infrastructure for the Avoca Copper Mine.
Mining Lease	1383	13/01/1996	13/01/2038	Mining at North East Copper Mine.
	1818	05/11/2021	05/11/2042	Mining at Avoca Tank Project
Environment Protection Licence	4501	13/12/1999	N/A	Mining (other than coal).
Note 1: This approval permitted a combined, maximum total of 1Mtpa of copper ore to be transported from the North East Open Cuts and Underground Mine and the Murrawombie Open Cut and Underground Mine to the Tritton Copper Mine.				
Source: Tritton Resources Pty Ltd				

## 1.3 Land Ownership and Land Use

**Table 2** presents the land ownership for land within Mine Site. In summary, land within the Mine Site consists predominantly of freehold land owned by the Company with the exception of Booroomugga Road reserve at the southern boundary and various Crown Roads located within or in the vicinity of the active mining areas (**Figure 4**). The closest residences to the North East Copper Mine is located approximately between 1.8km to the east of the ML1382 boundary, 1.8km north of the ML1818 boundary, and approximately 3.2km to the east of the principal disturbance areas of the Mine Site. Girilambone Village is located approximately 1.7km to 4.8km the southeast of the boundary of ML1383 and principal disturbance areas of the Mine Site, respectively. These residences are displayed on **Figure 4**.







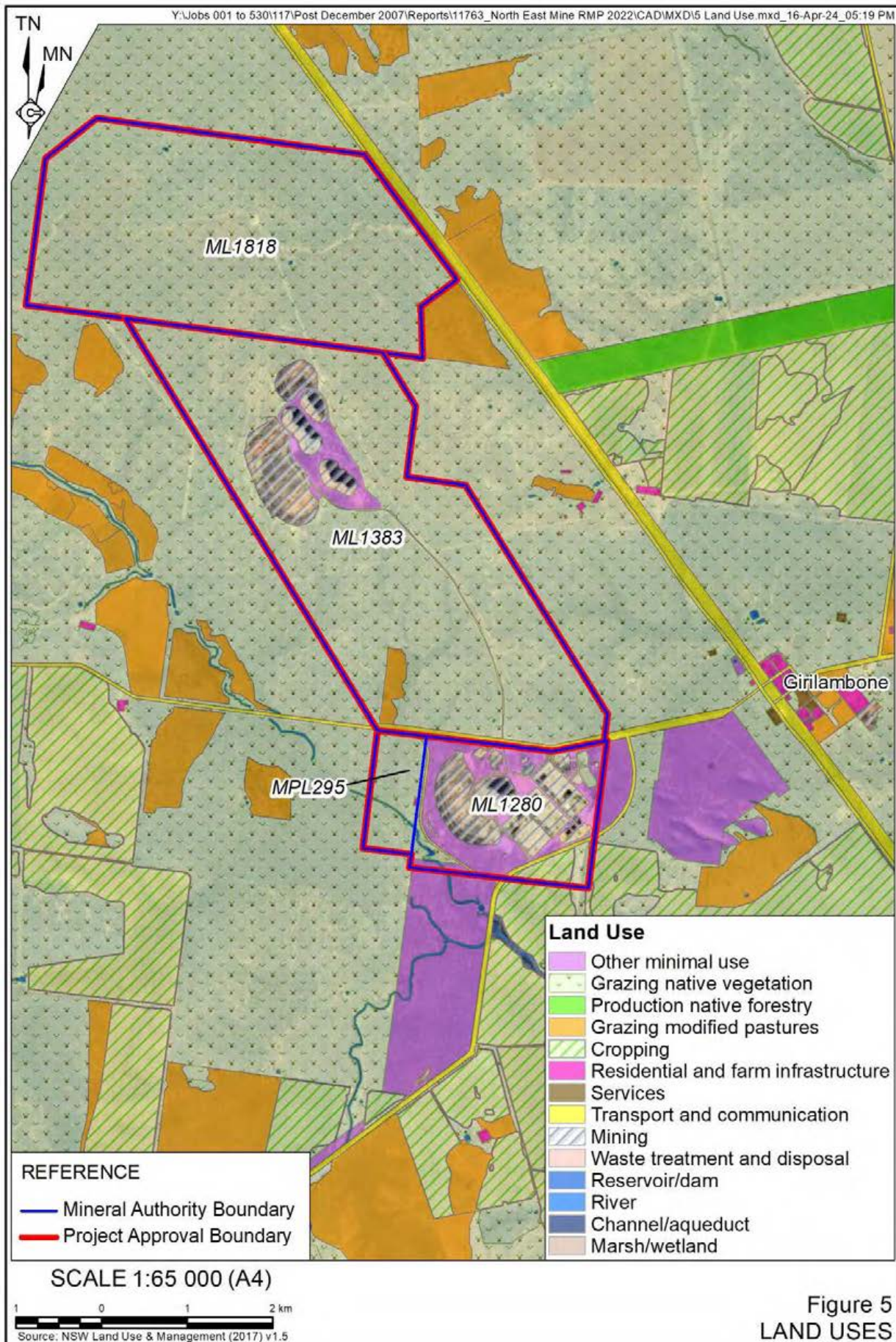
**Table 2**  
**Land Ownership**

Lot	Deposited Plan	Tenure	Owner	Leases
<b>Mine Site</b>				
16, 135	751315	Freehold	Straits Mining	ML1383
10, 135, 142, 144	751315	Freehold	Straits Mining	ML1383, ML1818
11, 13, 14, 30, 40, 51, 138, 139, 140, 141	751315	Freehold	Tritton Resources	ML1383
1	827919	Freehold	Tritton Resources	ML1383
12	858163	Freehold	Tritton Resources	ML1383
1	46859	Crown Land	The State of NSW	ML1383, ML1818
1	1222360	Freehold	Tritton Resources	ML1818
<b>Land Adjacent to the Mine Site</b>				
8	751342	Freehold	Private Individual	ML1383
1/7, 1/8, 11/15, 1/16, 2/16, 3/16, 4/16, 5/16, 6/16, 7/16, 8/16, 9/16, 10/16	986	Freehold	Straits Mining	ML1383
1	253228	Freehold	Straits Mining	ML1383
11	858163	Freehold	Straits Mining	ML1383, ML1280
22	861603	Freehold	Straits Mining	ML1383, ML1280
300, 302, 301	1161667	Freehold	Straits Mining	ML1383
300, 301	1161667	Freehold	Straits Mining	ML1383, MPL294
28, 56	751315	Freehold	Straits Mining	ML1383
1	822427	Freehold	Tritton Resources	ML1383
3	751315	Freehold	Tritton Resources	ML1383

Land uses within and surrounding the Mine Site include the following (**Figure 5**).

- Mining – the approved (development / construction commenced) operation to the north (Avoca Tank) and south (Murrawombie).
- Agriculture – land within and surrounding the Mine Site has been or is currently being used for agricultural purposes, principally, sheep and cattle grazing and cropping. A range of agricultural properties include residences.
- Native vegetation forestry – The Girilambone State Forest occupies an area to the east of the Mine Site.
- Transportation – a range of State and local roads exist in the vicinity of the Mine Site, including Mitchell and Barrier Highways. The disused Main Western Railway is located to the east of the Mitchell Highway.
- Village residential – the village of Girilambone is located approximately 1.7km to the southeast of the Mine Site.

Proposed final land uses for the Mine Site are detailed in Section 2 of this RMP. In summary, it is proposed that final land uses will include mixed native ecosystems that would generally be capable of supporting light agricultural grazing.





### 1.3.1 Land Ownership and Land Use Figure

**Figure 4** presents land ownership for areas within and surrounding the Mine Site. **Figure 5** presents land uses in the vicinity of the Mine Site. **Figure 6** presents vegetation communities within the Mine Site and the surrounding region. **Figure 7** presents land zoning in the vicinity of the Mine Site.

